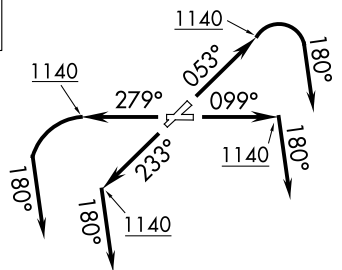


# CAVVS FOUR DEPARTURE (RNAV)

AWOS-3PT 119.225  
CTAF 122.725  
CLEVELAND DEP CON  
125.35 346.325

**TOP ALTITUDE:  
ASSIGNED BY ATC**

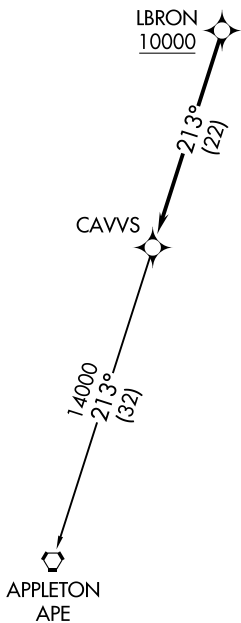


NOTE: RADAR required.  
NOTE: RNAV 1.  
NOTE: DME/DME/IRU or GPS required.

**TAKEOFF MINIMUMS:**  
Rwys 5, 10, 23, 28: Standard with a minimum climb  
of 500' per NM to 1140.

EC-2, 15 MAY 2025 to 12 JUN 2025

EC-2, 15 MAY 2025 to 12 JUN 2025



NOTE: Chart not to scale.



## DEPARTURE ROUTE DESCRIPTION

**TAKEOFF RUNWAY 5:** Climb on heading 053° to 1140, then right turn heading 180° or as assigned by ATC for RADAR vectors to cross LBRON at or above 10000, thence....

**TAKEOFF RUNWAY 10:** Climb on heading 099° to 1140, then on heading 180° or as assigned by ATC for RADAR vectors to cross LBRON at or above 10000, thence....

**TAKEOFF RUNWAY 23:** Climb on heading 233° to 1140, then on heading 180° or as assigned by ATC for RADAR vectors to cross LBRON at or above 10000, thence....

**TAKEOFF RUNWAY 28:** Climb on heading 279° to 1140, then left turn heading 180° or as assigned by ATC for RADAR vectors to cross LBRON at or above 10000, thence....

....on track 213° to CAVVS, then on (transition).

Maintain altitude assigned by ATC, expect filed altitude ten minutes after departure.

APPLETON TRANSITION (CAVVS4.APE)

# CAVVS FOUR DEPARTURE (RNAV)