

(DARCY7.DARCY) 24305

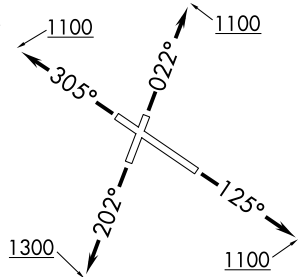
AL-748 (FAA)

GARY/CHICAGO INTL (GYY)
GARY/CHICAGO, INDIANA

DARCY SEVEN DEPARTURE (RNAV)

CHICAGO DEP CON 133.1 285.6 ATIS 134.575 GND CON 121.9 GARY TOWER ★ 125.6 (CTAF)	RNAV 1 - DME/DME/IRU or GPS. RADAR required. RADAR required for non-GPS equipped aircraft.
---	--

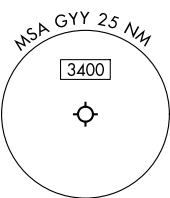
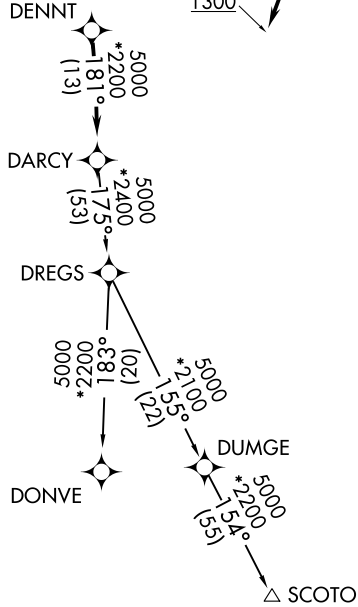
**TOP ALTITUDE:
3000**



TAKEOFF MINIMUMS:

Rwy 2: Standard with minimum climb of 323' per NM to 900.
Rwys 12, 20, 30: Standard.

NOTE: Turbojet departures maintain 250K until advised by ATC.



NOTE: Chart not to scale.

DEPARTURE ROUTE DESCRIPTION

- TAKEOFF RUNWAY 2: Climb on heading 022° to 1100, then as assigned by ATC, for vectors to DENNT, thence. . . .
- TAKEOFF RUNWAY 12: Climb on heading 125° to 1100, then as assigned by ATC, for vectors to DENNT, thence. . . .
- TAKEOFF RUNWAY 20: Climb on heading 202° to 1300, then as assigned by ATC, for vectors to DENNT, thence. . . .
- TAKEOFF RUNWAY 30: Climb on heading 305° to 1100, then as assigned by ATC, for vectors to DENNT, thence. . . .

. . . . on track 181° to DARC, then on (transition), maintain 3000.
Expect filed altitude 10 minutes after departure.

- DONVE TRANSITION (DARCY7.DONVE):
- SCOTO TRANSITION (DARCY7.SCOTO):

DARCY SEVEN DEPARTURE (RNAV)
(DARCY7.DARCY) 31OCT24

GARY/CHICAGO, INDIANA
GARY/CHICAGO INTL (GYY)

EC-2, 15 MAY 2025 to 12 JUN 2025

EC-2, 15 MAY 2025 to 12 JUN 2025