

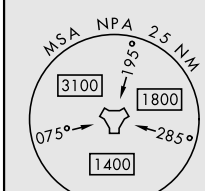
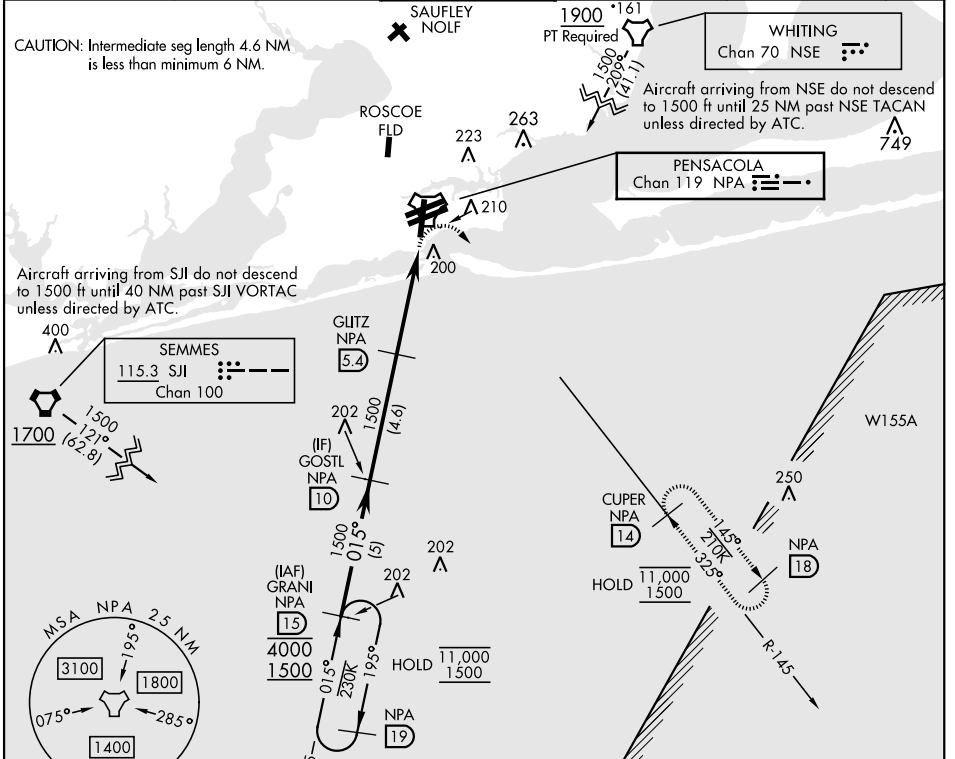
TACAN Y RWY 1

TACAN NPA Chan 119	APCH CRS 015°	Rwy Idg TDZE Arprt Elev 7136 28 28
------------------------------	-------------------------	--

[USN] PENSACOLA NAS (FORREST SHERMAN FLD) (KNPA)

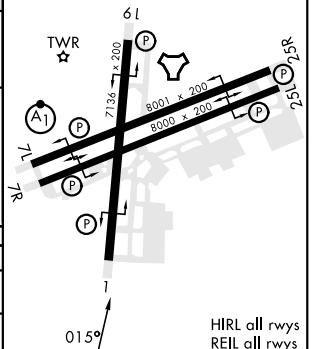
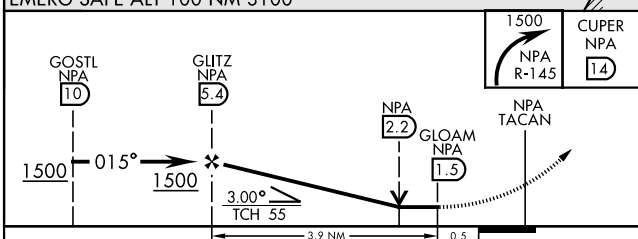
V MISSED APPROACH: Climbing right turn to 1500 via NPA TACAN R-145 to CUPER and hold.

ATIS 124.35 266.8	APP CON 120.65 270.8	SHERMAN TOWER 120.7 340.2	GND CON 121.7 336.4	CLNC DEL 134.1 268.7	ASR/ PAR
-----------------------------	--------------------------------	-------------------------------------	-------------------------------	--------------------------------	-------------



EMERG SAFE ALT 100 NM 3100

ELEV	28	TDZE	28
------	----	------	----



CATEGORY	A	B	C	D	E
S-1	460-1	432 (500-1)	460-1½	432 (500-1½)	
CIRCLING	520-1	492 (500-1)	540-1½ 512 (600-1½)	580-2	552 (600-2)

PENSACOLA, FLORIDA 30°21'N-87°19'W PENSACOLA NAS (FORREST SHERMAN FLD) (KNPA)

Orig 02DEC21

TACAN Y RWY 1

SE-3, 15 MAY 2025 to 12 JUN 2025

SE-3, 15 MAY 2025 to 12 JUN 2025