

# RNAV (GPS) RWY 25L

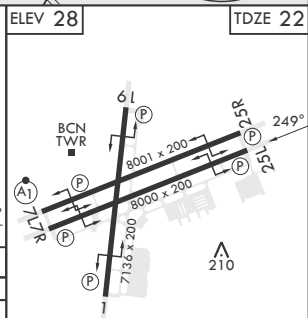
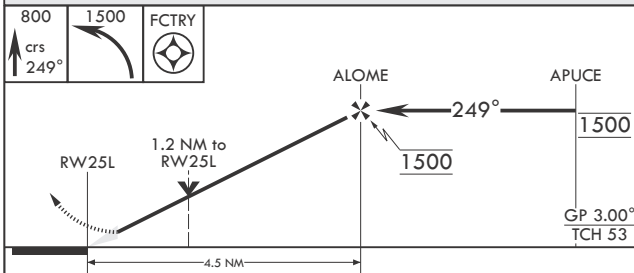
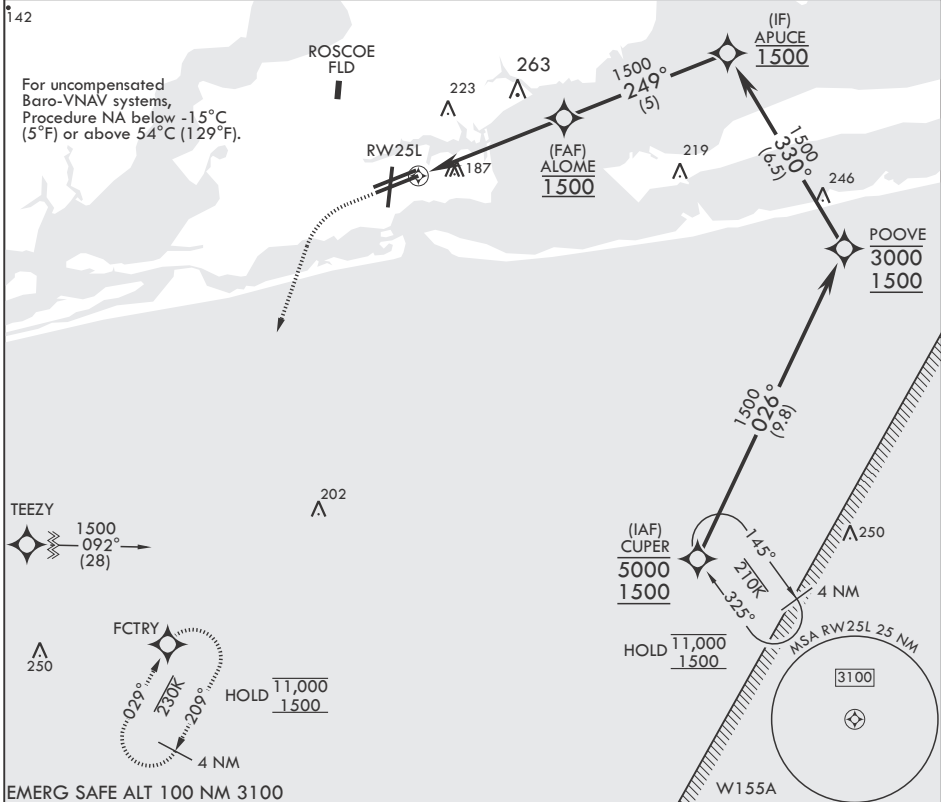
APCH CRS	Rwy Idg	8000
249°	TDZE	22
	Arprt Elev	28

-(USN)

PENSACOLA NAS (FORREST SHERMAN FLD) (KNPA)

RNP APCH	MISSED APPROACH: Climb to 800 then climbing left turn to 1500 direct FCTRY and hold.				
----------	--	--	--	--	--

ATIS	APP CON	SHERMAN TOWER	SHERMAN GND CON	SHERMAN CLNC DEL	ASR/PAR
124.35 266.8	120.65 270.8	120.7 340.2	121.7 336.4	134.1 268.7	



CATEGORY	A	B	C	D
LNAV/VNAV DA	440-1 1/8	418	(500-1 1/8)	
LNAV MDA	440-1	418 (500-1)	440-1 1/8	418 (500-1 1/8)
CIRCLING	520-1	492 (500-1)	540-1 1/2 512 (600-1 1/2)	580-2 552 (600-2)

HIRL all Rwys  
REIL all Rwys

# RNAV (GPS) RWY 25L

SE-3, 15 MAY 2025 to 12 JUN 2025

SE-3, 15 MAY 2025 to 12 JUN 2025