

PENSACOLA, FLORIDA

RNAV (GPS) RWY 1

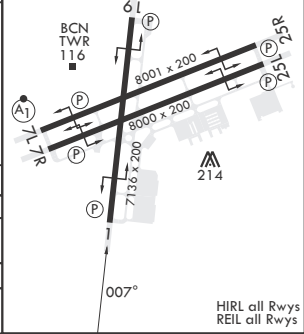
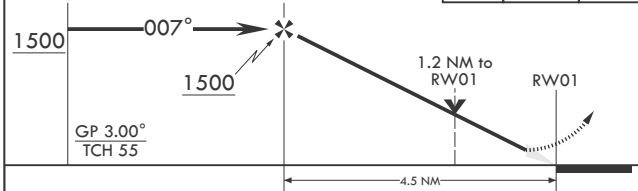
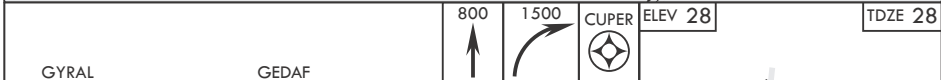
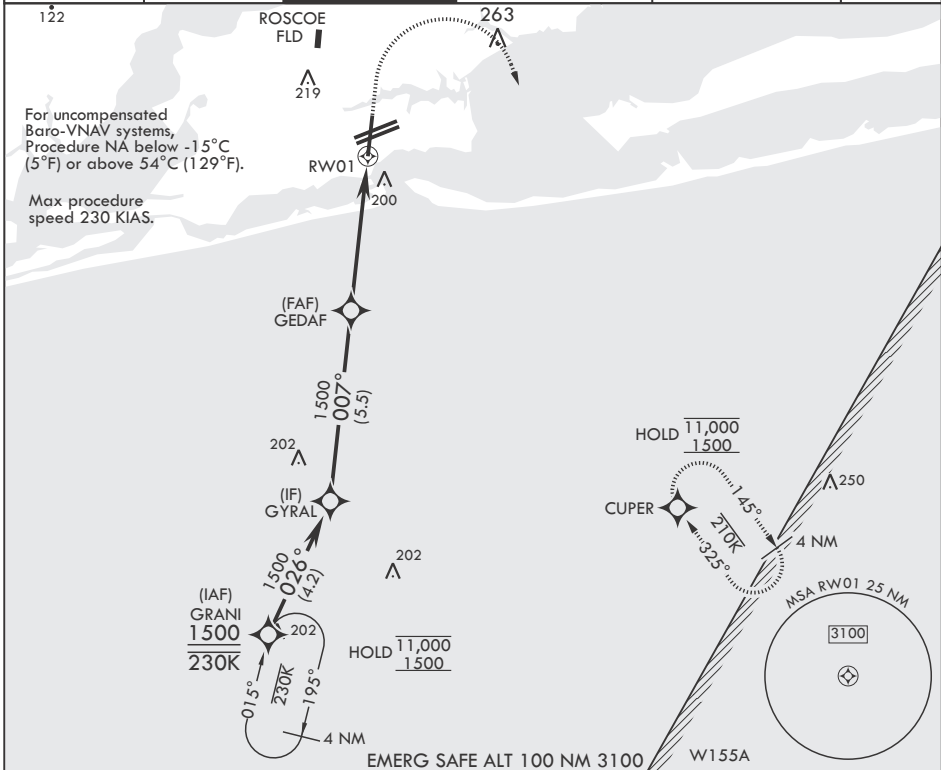
APCH CRS 007°	Rwy Idg 7136	TDZE 28	Arprt Elev 28
------------------	-----------------	------------	------------------

- (USN)

PENSACOLA NAS (FORREST SHERMAN FLD) (KNPA)

RNP APCH	MISSED APPROACH: Climb to 800 then climbing right turn to 1500 direct CUPER and hold.
RADAR required	

ATIS 124.35 266.8	APP CON 120.65 270.8	SHERMAN TOWER 120.7 340.2	SHERMAN GND CON 121.7 336.4	SHERMAN CLNC DEL 134.1 268.7	ASR/PAR
----------------------	-------------------------	------------------------------	--------------------------------	---------------------------------	---------



CATEGORY	A	B	C	D
LNAV/VNAV DA	331-7/8 303 (400-7/8)	342-7/8 314 (400-7/8)	350-1 322 (400-1)	361-1 333 (400-1)
LNAV MDA	460-1	432 (500-1)	460-1 1/4	432 (500-1 1/4)
C CIRCLING	520-1	492 (500-1)	540-1 1/2 512 (600-1 1/2)	580-2 552 (600-2)

PENSACOLA, FLORIDA

30°21'N - 87°19'W PENSACOLA NAS (FORREST SHERMAN FLD) (KNPA)

Amdt 4 02DEC21

RNAV (GPS) RWY 1

SE-3, 15 MAY 2025 to 12 JUN 2025

SE-3, 15 MAY 2025 to 12 JUN 2025