

RNAV (GPS) RWY 36

SBAS Chan 67830 W36A	APCH CRS 359°	Rwy Idg 9600 TDZE 37 Arpt Elev 38
--	-------------------------	--

[USAF]

HURLBURT FLD (KHRT)

RNP APCH

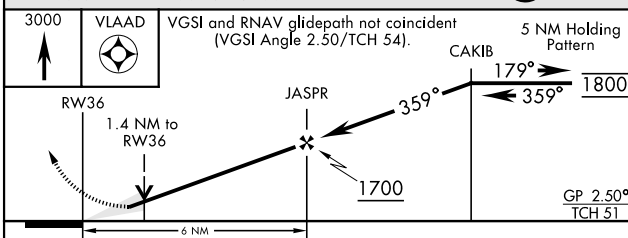
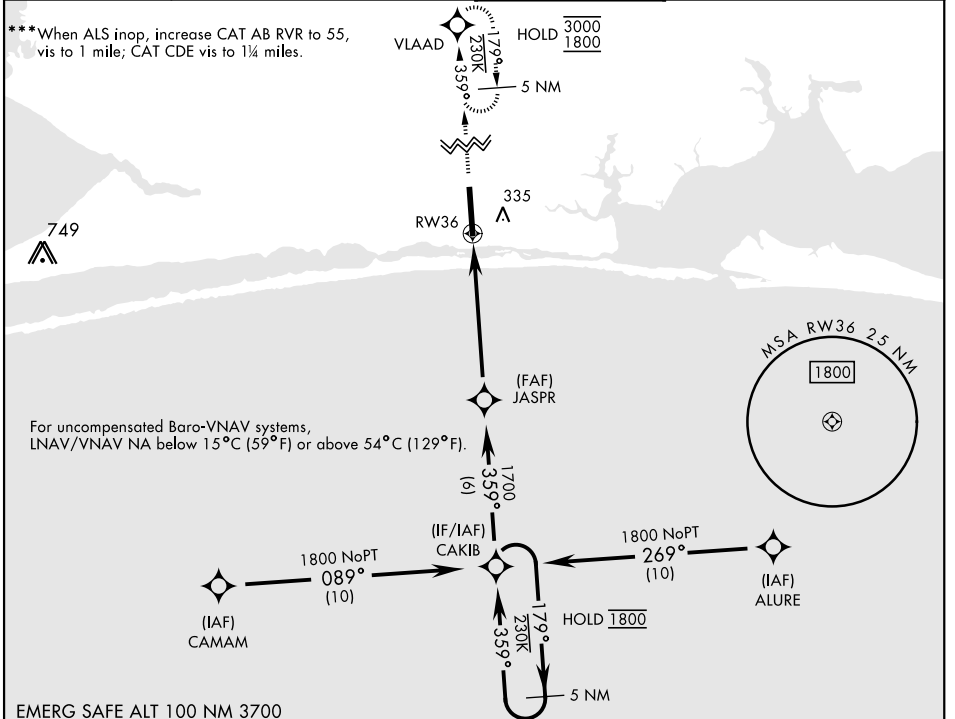
ALSIF-1

MISSED APPROACH: Climb to 3000 direct VLAAD and hold.

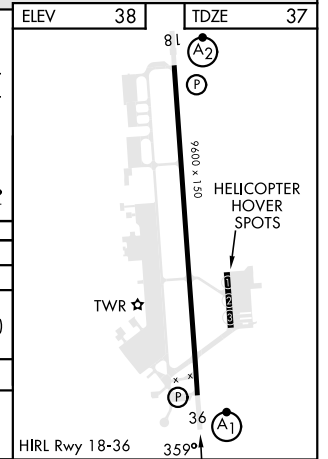
▼ * When ALS inop, increase RVR to 40, vis to ¼ mile.
** When ALS inop, increase RVR to 45, vis to ⅓ mile.

ATIS 134.475 360.675	EGLIN APP CON 125.1 281.45 (271° - 089°) 132.1 360.6 (090° - 270°)	TOWER 126.5 351.675	GND CON 123.975 275.8
--------------------------------	--	-------------------------------	---------------------------------

***When ALS inop, increase CAT AB RVR to 55, vis to 1 mile; CAT CDE vis to 1¼ miles.



CATEGORY	A	B	C	D	E
LPV DA *	237/24		200	(200-½)	
LNAV/VNAV DA **	327/24 290 (300-½)	338/24 301 (300-½)	346/24 309 (400-½)	357/24	320 (400-½)
LNAV MDA ***	460/24	423 (500-½)	460/40	423	(500-¾)
CIRCLING	640-1	602 (700-1)	640-1¾ (700-1¾)	840-2½ (900-2½)	840-2¾ 802 (900-2¾)



RNAV (GPS) RWY 36

SE-3, 15 MAY 2025 to 12 JUN 2025

SE-3, 15 MAY 2025 to 12 JUN 2025