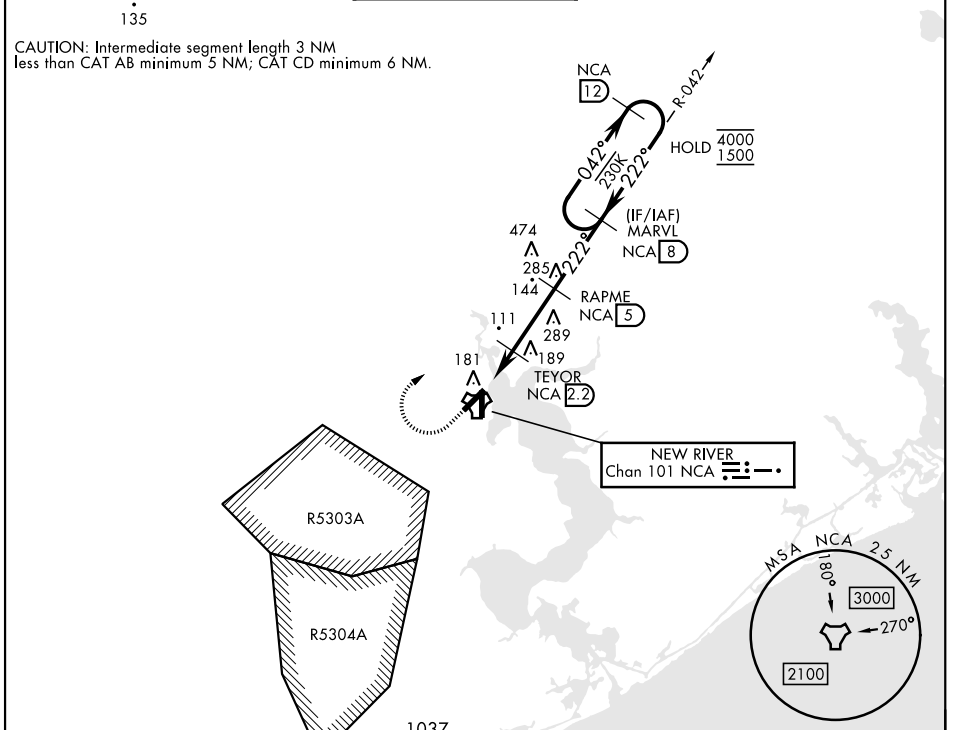


TACAN RWY 23

TACAN NCA Chan 101	APCH CRS 222°	Rwy ldg TDZE Arprt Elev	5125 24 26	[USN] NEW RIVER MCAS (MCCUTCHEON FLD) (KNCA)
------------------------------	-------------------------	-------------------------------	---------------------------------------	--

RADAR required		MISSED APPROACH: Climb to 600 then climbing right turn to 1500, intercept NCA R-042 to MARVL and hold.			
----------------	--	--	--	--	--

ATIS ★ 288.325	CHERRY POINT APP CON 119.35 377.175	TOWER ★ 134.95 (CTAF) 0★ 360.2	GND CON 121.8 254.275	CLNC DEL 269.25	ASR/PAR
--------------------------	---	---	---------------------------------	---------------------------	---------



ELEV	26	TDZE	24
------	----	------	----

EMERG SAFE ALT 100 NM 3400

VGSI and descent angles not coincident (VGSI Angle 3.00/TCH 37).

This detailed diagram shows the vertical profile of the approach. It includes NCA points 1, 2, 5, 8, and 12. Key altitudes are 600, 1500, 600, 1500, and 4000 feet. Distances between NCA points are 1.2 NM and 2.8 NM. Descent angles of 2.99° and 3.00° are indicated. A circular inset shows the MSA for NCA 2.5 NM with a 3000-foot MSA and a 270-degree turn. A box indicates the NEW RIVER Chan 101 NCA.

CATEGORY	A		B		C		D	
S-23	440-1	416	(500-1)		440-1 $\frac{1}{8}$	416	(500-1 $\frac{1}{8}$)	
CIRCLING	500-1	474	(500-1)		700-2 674 (700-2)		700-2 $\frac{1}{4}$ 674 (700-2 $\frac{1}{4}$)	

HIRL all Rwy's 1

TACAN RWY 23

SE-2, 15 MAY 2025 to 12 JUN 2025

SE-2, 15 MAY 2025 to 12 JUN 2025