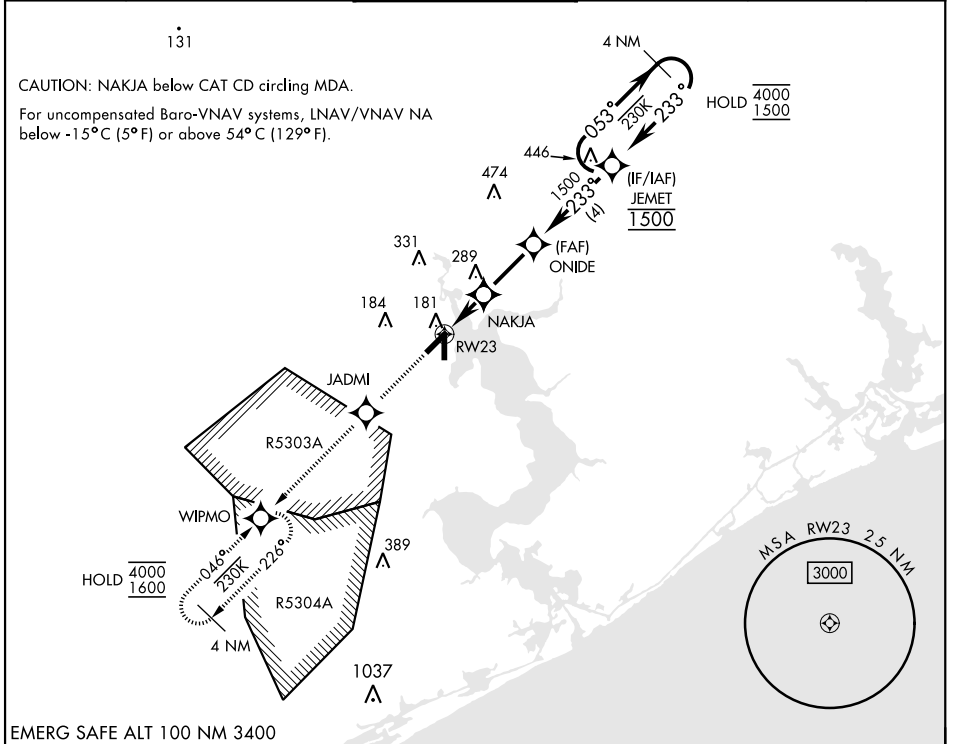


RNAV (GPS) RWY 23

WAAS Chan 92556 W23A	APCH CRS 233°	Rwy Idg TDZE 24 Arprt Elev 26	[USN]	NEW RIVER MCAS (MCCUTCHEON FLD) (KNCA)
--	-------------------------	---	-------	--

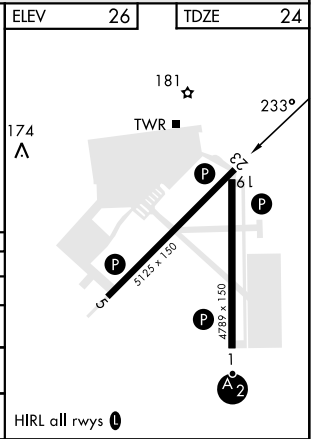
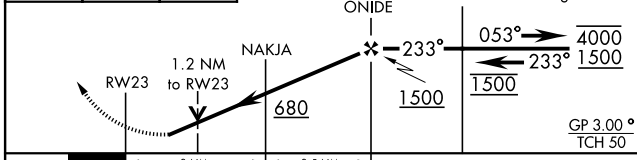
RNP APCH RADAR required	MISSED APPROACH: Climb to 1600 direct JADMI, track 233° to WIPMO and hold.
----------------------------	--

ATIS ★ 288.325	CHERRY POINT APP CON 119.35 377.175	TOWER ★ 134.95(CTAF) 0★ 360.2	GND CON 121.8 254.275	CLNC DEL 269.25	ASR/PAR
--------------------------	---	---	---------------------------------	---------------------------	---------



EMERG SAFE ALT 100 NM 3400

1600 ↑	JADMI	WIPMO	VGSIs and descent angles not coincident (VGSi Angle 3.00/TCH 37)	ELEV 26	TDZE 24
-----------	-------	-------	--	---------	---------



CATEGORY	A	B	C	D
LPV DA	224- ³ / ₄		200	(200- ³ / ₄)
LNAV/VNAV DA	312- ⁷ / ₈ 288 (300- ⁷ / ₈)	323- ⁷ / ₈ 299 (300- ⁷ / ₈)	331- ⁷ / ₈ 307 (400- ⁷ / ₈)	342- ⁷ / ₈ 318 (400- ⁷ / ₈)
LNAV MDA	440-1	416 (500-1)	440-1 ¹ / ₈	416 (500-1 ¹ / ₈)
CIRCLING	500-1	474 (500-1)	700-2 674 (700-2)	700-2 ¹ / ₄ 674 (700-2 ¹ / ₄)

HIRL all rwys 1

RNAV (GPS) RWY 23

SE-2, 15 MAY 2025 to 12 JUN 2025

SE-2, 15 MAY 2025 to 12 JUN 2025