

VORTAC OSH 116.75 Chan 114 (Y)	APP CRS 090°	Rwy Idg 5648 TDZE 797 Apt Elev 808
--	------------------------	---

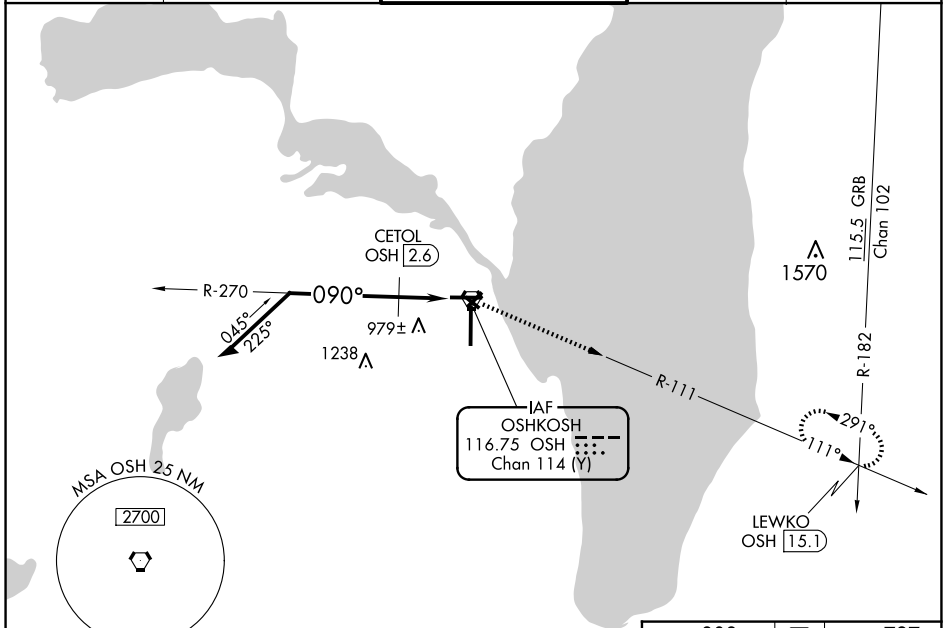
VOR RWY 9

WITTMAN RGNL (OSH)

⚠ Circling to Rwy 5, 23, and 31 NA at night. When local altimeter setting not received, use Fond Du Lac altimeter setting and increase all MDA 40 feet and increase S-9 Cats C and D visibility and Circling Cat C visibility 1/8 mile and Circling Cat D visibility 1/4 mile, increase CETOL fix minimums Circling Cat D visibility 1/4 mile. VDP NA with Fond Du Lac altimeter setting. Helicopter visibility reduction below 3/4 SM NA.

MISSED APPROACH: Climb to 3000 on OSH VORTAC R-111 to LEWKO INT/OSH 15.1 DME and hold.

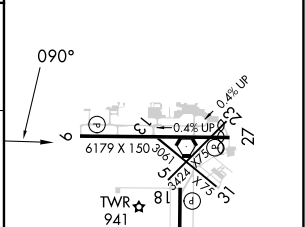
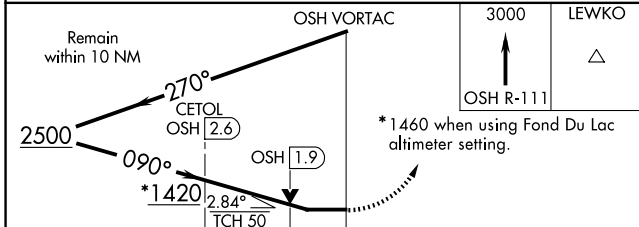
ATIS 125.9	MILWAUKEE APP CON 127.0 263.075	OSHKOSH TOWER ★ 118.5 (CTAF) 290.9	GND CON 132.3	UNICOM 122.95
----------------------	---	--	-------------------------	-------------------------



EC-3, 15 MAY 2025 to 12 JUN 2025

EC-3, 15 MAY 2025 to 12 JUN 2025

ELEV 808	D	TDZE 797
----------	----------	----------



CATEGORY	A	B	C	D
S-9	1420-1	623 (700-1)	1420-1 ³ / ₄	623 (700-1 ³ / ₄)
C CIRCLING	1420-1	612 (700-1)	1420-1 ³ / ₄	1440-2 612 (700-1 ³ / ₄)
CETOL FIX MINIMUMS				
S-9	1240-1	443 (500-1)	1240-1 ³ / ₈	443 (500-1 ³ / ₈)
C CIRCLING	1280-1 472 (500-1)	1300-1 492 (500-1)	1360-1 ¹ / ₂ 552 (600-1 ¹ / ₂)	1440-2 632 (700-2)

REIL Rwy 18 and 27
HRL Rwy 9-27 and 18-36