

LOC/DME I-DCU 110.55 Chan 42 (Y)	APP CRS 185°	Rwy ldg 6107 TDZE 592 Apt Elev 592
---	------------------------	---

ILS or LOC RWY 18

PRYOR FLD RGNL (DCU)

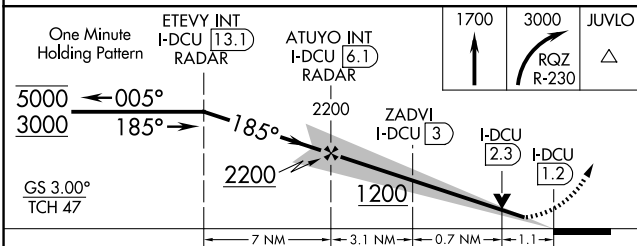
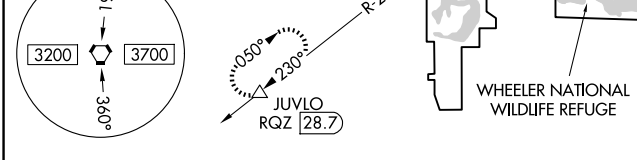
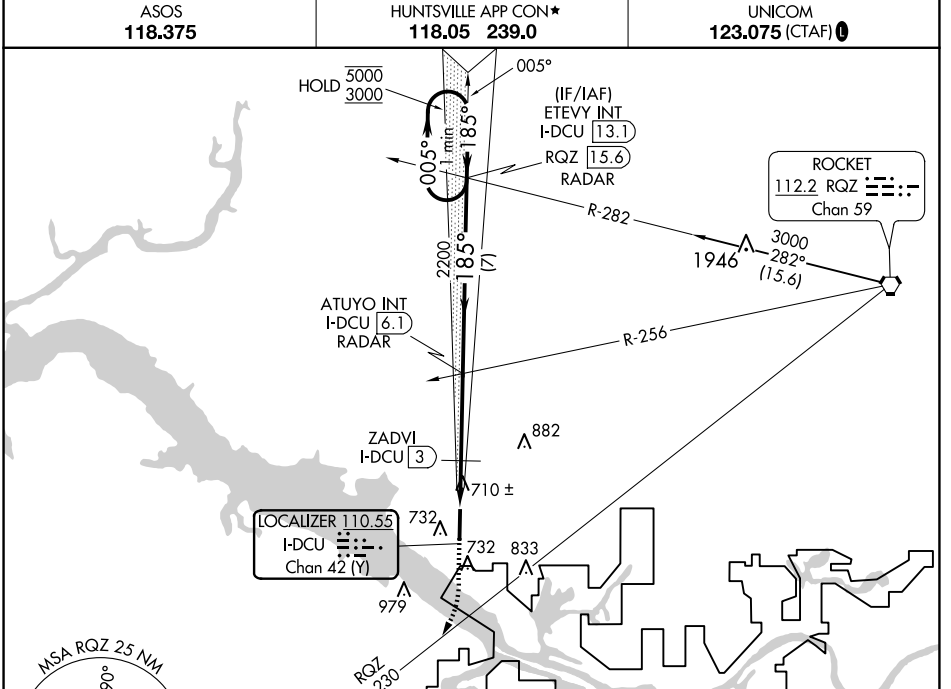
DME required.

ASOS 118.375

HUNTSVILLE APP CON* 118.05 239.0

UNICOM 123.075 (CTAF) 0

MISSED APPROACH: Climb to 1700, then climbing right turn to 3000 on RQZ VORTAC R-230 to JUVLO/RQZ 28.7 DME and hold.



CATEGORY	A	B	C	D
S-ILS 18		792- ³ / ₄	200 (200- ³ / ₄)	
S-LOC 18	980-1	388 (400-1)	980-1 ¹ / ₈	388 (400-1 ¹ / ₈)
CIRCLING	1040-1 448 (500-1)	1060-1 468 (500-1)	1340-2 ¹ / ₄ 748 (800-2 ¹ / ₄)	1340-2 ¹ / ₂ 748 (800-2 ¹ / ₂)

ELEV 592	TDZE 592
1700	3000
JUVLO	RQZ R-230
81	6107 X 100
636	36
HIRL Rwy 18-36 0	
REIL Rwy 18 and 36 0	
FAF to MAP 4.9 NM	
Knots	60 90 120 150 180
Min:Sec	4:54 3:16 2:27 1:58 1:38

SE-4, 15 MAY 2025 to 12 JUN 2025

SE-4, 15 MAY 2025 to 12 JUN 2025