

WAAS CH 53717 W19A	APP CRS 187°	Rwy Idg 9001	TDZE 683
		Apt Elev 690	

RNAV (GPS) RWY 19

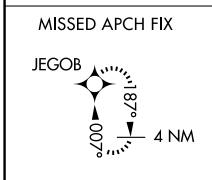
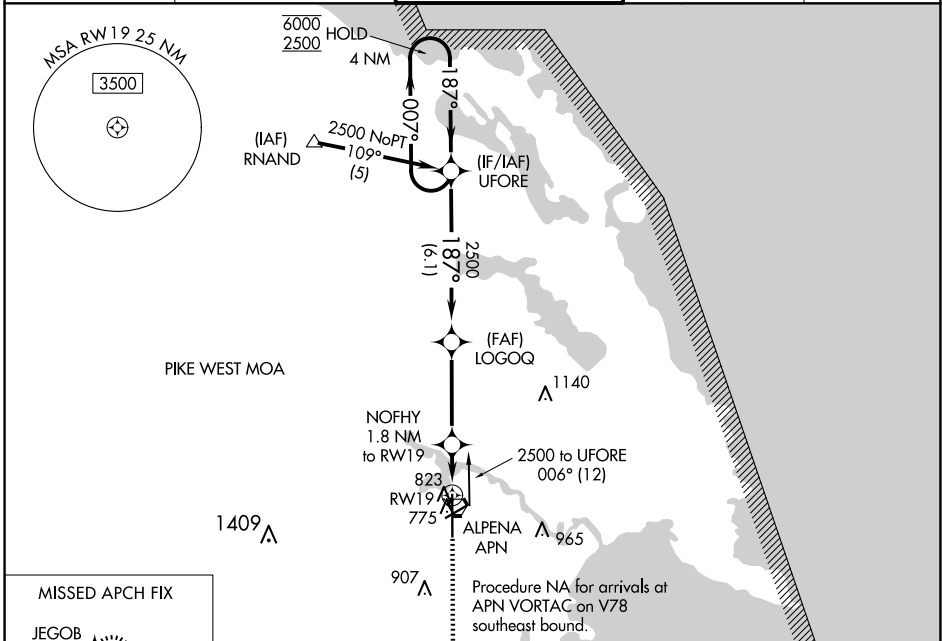
ALPENA COUNTY RGNL (APN)

RNP APCH:

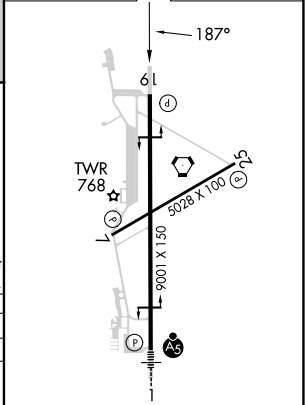
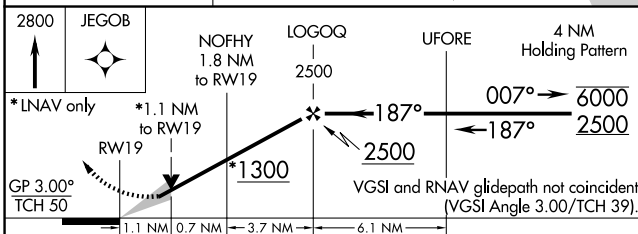
▼ For uncompensated Baro-VNAV systems, LNAV/VNAV NA below -16°C or above 54°C.

MISSED APPROACH: Climb to 2800 direct JEGOB and hold.

ATIS 120.675 327.05	ALPENA APP CON * 128.425 379.3	ALPENA TOWER * 121.35 (CTAF) 0 318.1	GND CON 121.9 275.8	UNICOM 122.95
-------------------------------	--	--	-------------------------------	-------------------------



ELEV 690	D TDZE 683
----------	-------------------



CATEGORY	A	B	C	D
LPV DA	933-3/4		250 (300-3/4)	
LNAV/VNAV DA	1020-1 1/4		337 (400-1 1/4)	
LNAV MDA	1080-1 397 (400-1)		1080-1 1/8 397 (400-1 1/8)	
C CIRCLING	1140-1 450 (500-1)		1220-1 1/2 530 (600-1 1/2) 1280-2 590 (600-2)	

HIRL Rwy 1-19 **1**
 MIRL Rwy 7-25 **1**
 REIL Rws 7, 19 and 25 **1**

EC-1, 15 MAY 2025 to 12 JUN 2025

EC-1, 15 MAY 2025 to 12 JUN 2025