

WAAS CH 50310 W01A	APP CRS 007°	Rwy Idg TDZE Apt Elev	9001 685 690
--	------------------------	-----------------------------	---

RNAV (GPS) RWY 1

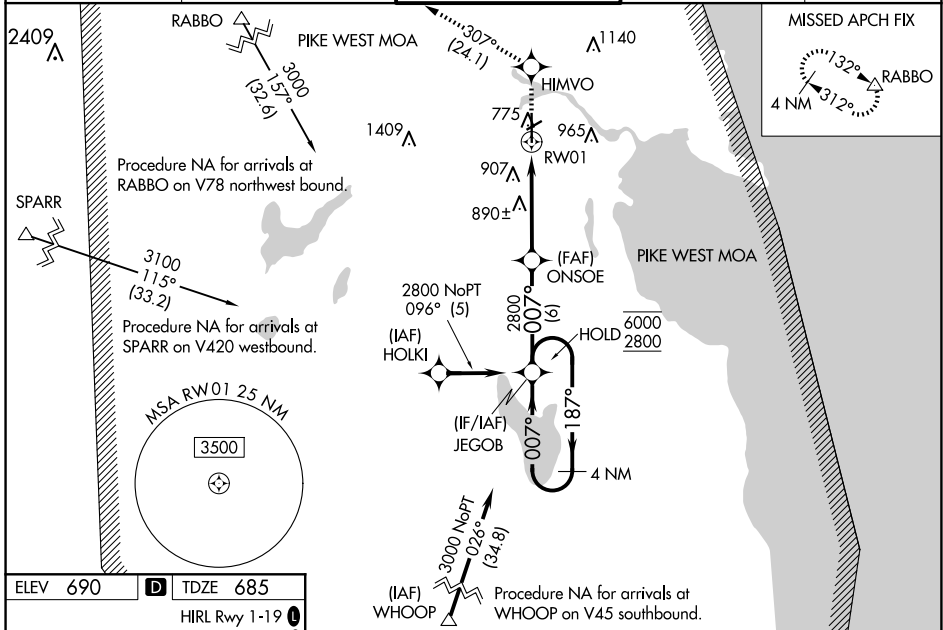
ALPENA COUNTY RGNL (APN)

RNP APCH - GPS.

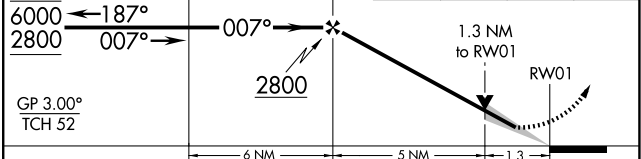
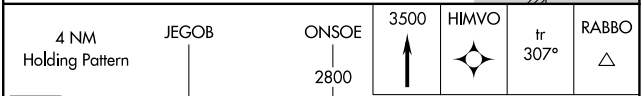
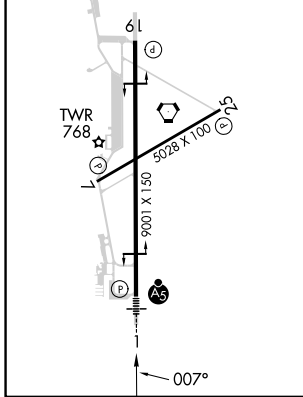
▼ For uncompensated Baro-VNAV systems, LNAV/VNAV NA below -16°C or above 54°C. Baro-VNAV and VDP NA when using PZQ altimeter setting. For inop ALS, increase LPV all Cats visibility to 7/8 SM, LNAV/VNAV all Cats visibility to 1 SM and LNAV Cats C/D visibility to 1 3/8 SM. When local altimeter setting not received, use PZQ altimeter setting and increase LPV DA to 1029 feet and all visibilities 1/8 SM; increase LNAV/VNAV DA to 1084 feet; increase all MDA's 60 feet. For inop ALS when using PZQ altimeter setting, increase LPV all Cats visibility to 1 SM.

MALSR
AS
MISSED APPROACH:
Climb to 3500 direct HIMVO and on track 307° to RABBO and hold.

ATIS 120.675 327.05	ALPENA APP CON * 128.425 379.3	ALPENA TOWER * 121.35 (CTAF) 318.1	GND CON 121.9 275.8	UNICOM 122.95
-------------------------------	--	--	-------------------------------	-------------------------



ELEV 690	D TDZE 685
HIRL Rwy 1-19 ①	
MIRL Rwy 7-25 ②	
REIL Rwys 7, 19 and 25 ③	



CATEGORY	A	B	C	D
LPV DA		974-1/2	289 (300-1/2)	
LNAV/VNAV DA		1029-5/8	344 (400-5/8)	
LNAV MDA	1160-1/2	475 (500-1/2)	1160-1	475 (500-1)
C CIRCLING	1160-1	470 (500-1)	1220-1 1/2 530 (600-1 1/2)	1300-2 610 (700-2)

EC-1, 15 MAY 2025 to 12 JUN 2025

EC-1, 15 MAY 2025 to 12 JUN 2025