

ALPENA, MICHIGAN

HI-VOR or TACAN RWY 1

VORTAC APN 116.5 Chan 112	APCH CRS 014°	Rwy Idg TDZE Arprt Elev 9001 685 690	[USAF]	ALPENA COUNTY RGNL (KAPN)
---	-------------------------	--	--------	---------------------------

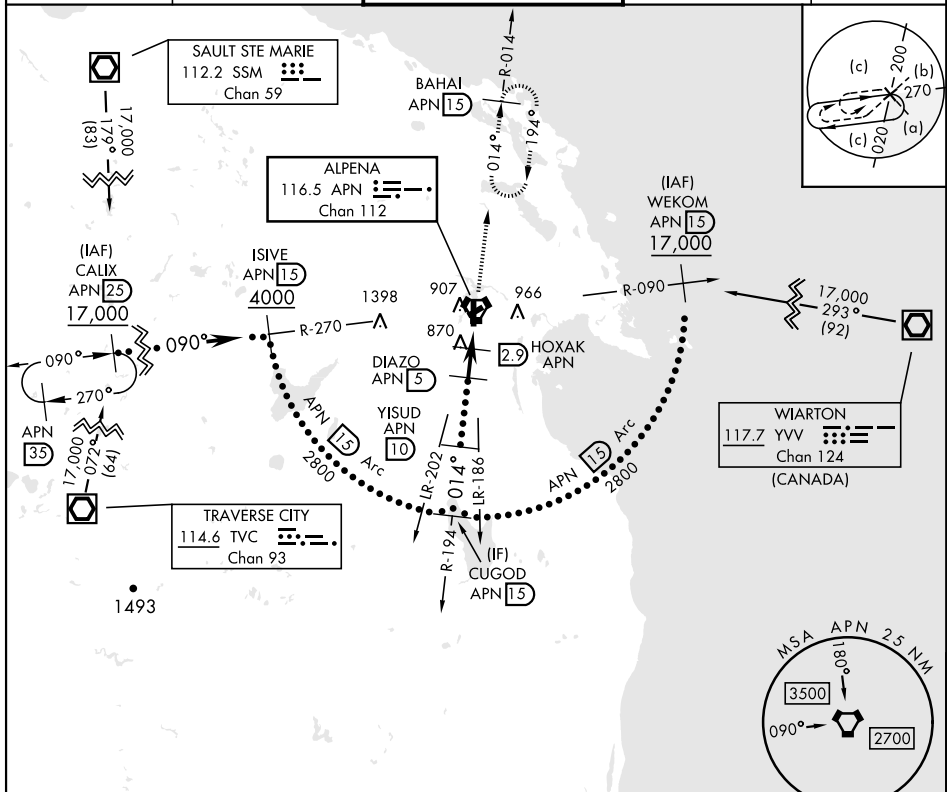
DME required

M *When ALS inop, increase vis to 1 3/8 miles.

MALSRL

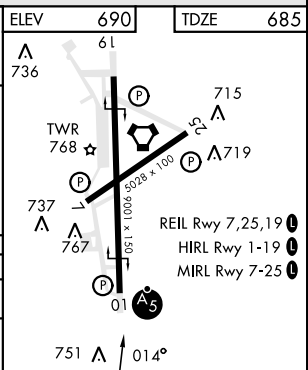
MISSED APPROACH: Climb to 5000 on APN R-014 to BAHAI 15 DME and hold, continue climb in hold to 5000.

ATIS ★ 120.675 327.05	ALPENA APP CON 128.425 379.3	ALPENA TOWER ★ 121.35 (CTAF) 0 318.1	GND CON 121.9 275.8	UNICOM 122.95
---------------------------------	--	--	-------------------------------	-------------------------



EMERG SAFE ALT 100 NM 4000

	CUGOD APN 15	YISUD APN 10	DIAZO APN 5	HOXAK APN 2.9	WUDIM APN 1.6	APN VORTAC	BAHAI APN 15	ELEV 690	TDZE 685
	2800	2800	2000	1340	1340			61	
			01.4°	3.14° TCH 52				736	
				2.1 NM	1.3 NM	0.5		737	
CATEGORY	C		D		E				
S-1 *	1140-7/8		455 (500-7/8)						
CIRCLING	1220-1 1/2 530 (600-1 1/2)		1280-2 590 (600-2)		1320-2 1/4 630 (700-2 1/4)				



ALPENA, MICHIGAN 45°05'N - 83°34'W ALPENA COUNTY RGNL (KAPN)

Amdt 1C 13AUG20

HI-VOR or TACAN RWY 1

EC-1, 15 MAY 2025 to 12 JUN 2025

EC-1, 15 MAY 2025 to 12 JUN 2025