

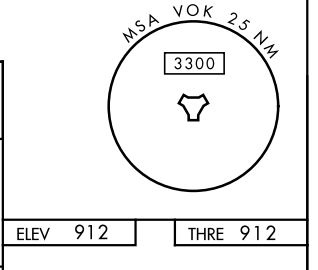
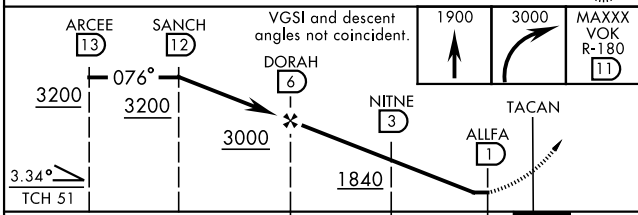
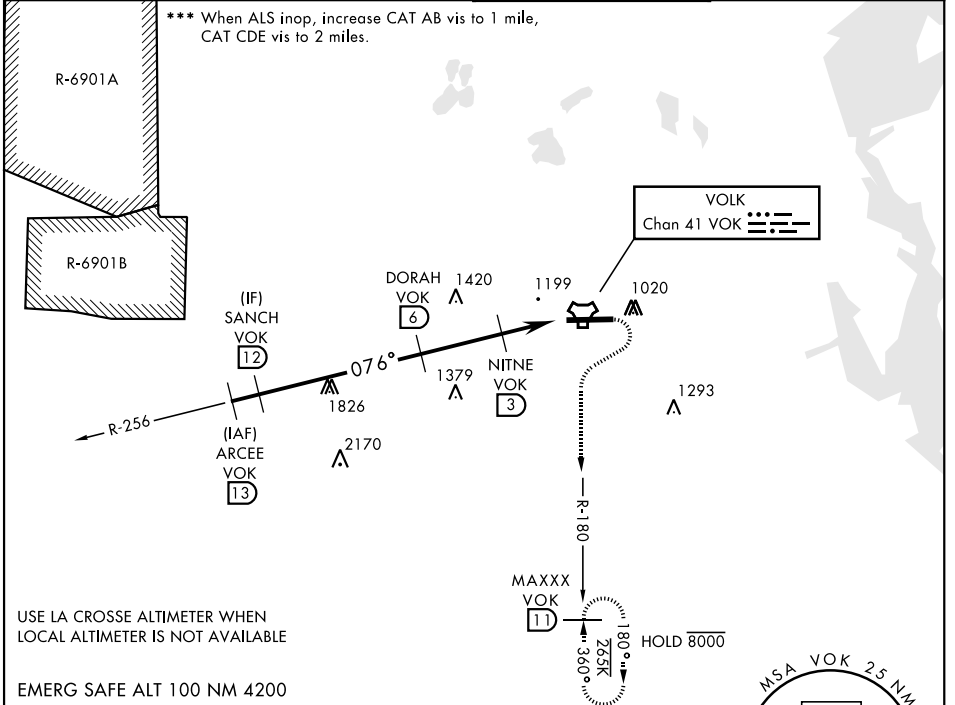
TACAN VOK Chan 41	APCH CRS 076°	Rwy ldg THRE Arpt Elev 9000 912 912	AL-714 [USAF]	VOLK FLD (KVOK)
----------------------	------------------	--	---------------	-----------------

▼ * When ALS inop, increase CAT AB vis to 1 mile, CAT CDE vis to 1 3/4 miles.
 ** Circling not authorized South of Rwy 9-27.

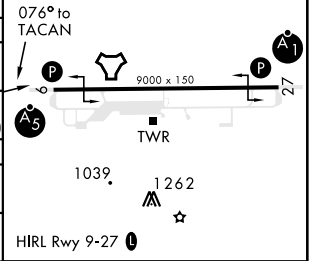
MALSR

MISSED APPROACH: Climb to 1900, then climbing right turn to 3000 intercept VOK R-180 to MAXXX and hold.

ATIS 134.35 257.85	APP CON 135.25 244.875	TOWER ★ 127.5 0 (CTAF) 239.25 0	GND CON 121.9 275.8
-----------------------	---------------------------	------------------------------------	------------------------



CATEGORY	A	B	C	D	E
S-9*	1500-3/4 588 (600-3/4)		1500-1 1/4 588 (600-1 1/4)		
CIRCLING**	1500-1 588 (600-1)		1500-1 3/4 588 (600-1 3/4)	1500-2 588 (600-2)	1580-2 1/4 668 (700-2 1/4)
LA CROSSE ALTIMETER SETTING MINIMUMS					
S-9***	1640-3/4 728 (800-3/4)		1640-1 5/8 728 (800-1 5/8)		
CIRCLING**	1640-1 728 (800-1)		1640-2 728 (800-2)	1640-2 1/4 728 (800-2 1/4)	1720-2 3/4 808 (900-2 3/4)



EC-3, 15 MAY 2025 to 12 JUN 2025

EC-3, 15 MAY 2025 to 12 JUN 2025