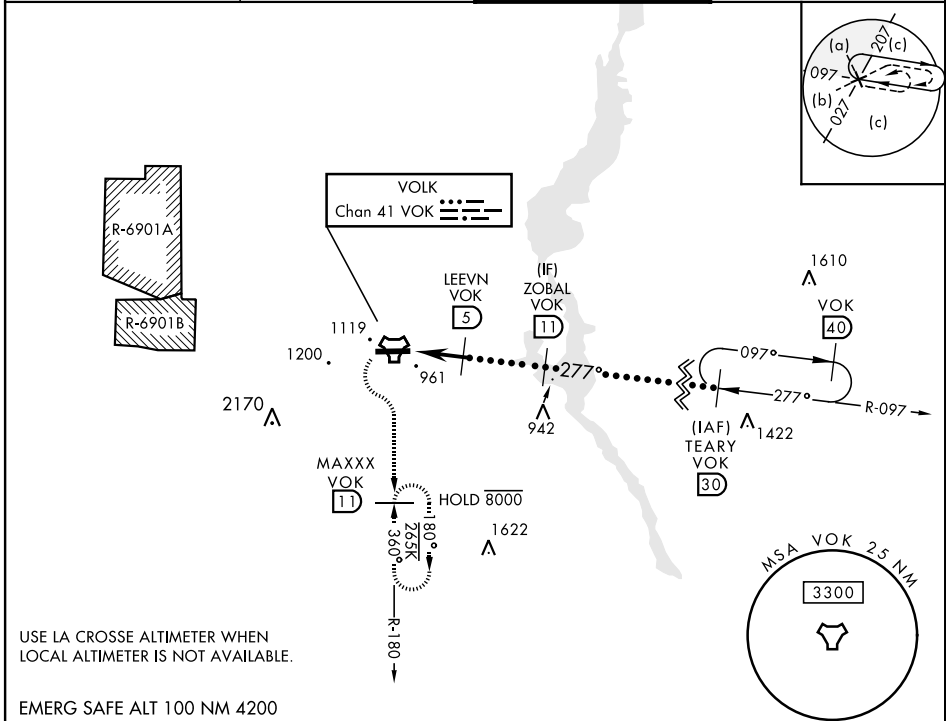


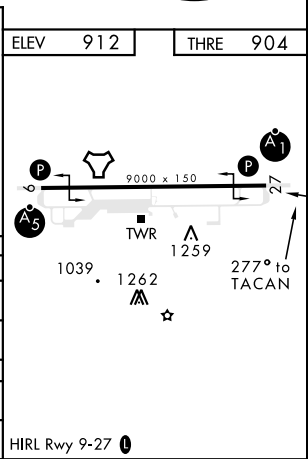
HI-TACAN RWY 27

TACAN VOK Chan 41	APCH CRS 277°	Rwy Idg THRE Arprt Elev 9000 904 912	AL-714 [USAF]	VOLK FLD (KVOK)
* When ALS inop, increase vis to 1½ miles. ** Circling not authorized South of Rwy 9-27. *** When ALS inop, increase vis to 1¾ miles.			ALSF-1	MISSED APPROACH: Climbing left turn to 3000 intercept VOK TACAN R-180 to MAXXX and hold.

ATIS 134.35 257.85	APP CON 135.25 244.875	TOWER★ 127.5 (CTAF) 239.25	GND CON 121.9 275.8
-----------------------	---------------------------	-------------------------------	------------------------



3000 VOK R-180	MAXXX VOK (11)	TEARY VOK (30)	
TACAN	EEDEE (1.5)	LEEVN (5)	
	2200	ZOBAL (11)	
	2700	FL180	
	0.5	3.5 NM	
2.94° TCH 53			
CATEGORY	C	D	E
S-27 *	1360/45 456 (500-7%)		
CIRCLING **	1500-1½ 588 (600-1½)	1500-2 588 (600-2)	1580-2¼ 668 (700-2¼)
LA CROSSE ALTIMETER SETTING MINIMUMS			
S-27 ***	1500- 1¼ 596 (600-1¼)		
CIRCLING **	1640-2 728 (800-2)	1640-2¼ 728 (800-2¼)	1720-2¾ 808 (900-2¾)



HI-TACAN RWY 27

EC-3, 15 MAY 2025 to 12 JUN 2025

EC-3, 15 MAY 2025 to 12 JUN 2025