

WAAS CH <b>78134</b> <b>W14A</b>	APP CRS <b>140°</b>	Rwy Idg TDZE Apt Elev	<b>4001</b> <b>826</b> <b>832</b>
--	------------------------	-----------------------------	---

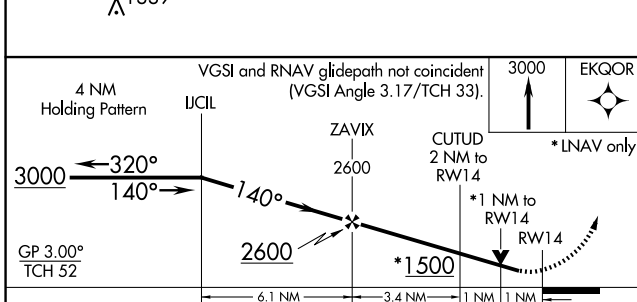
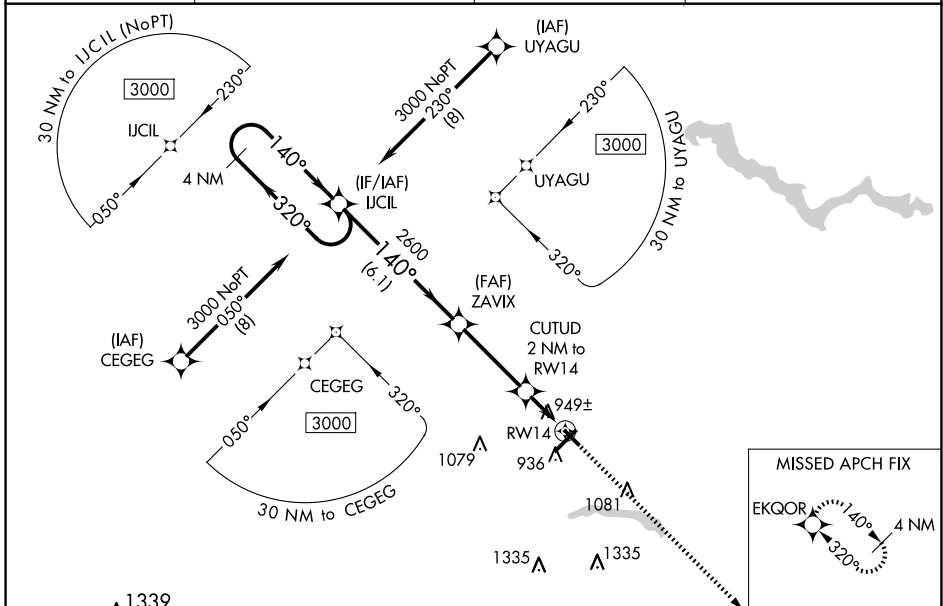
# RNAV (GPS) RWY 14

KOKOMO MUNI (OKK)

**⚠** For uncompensated Baro-VNAV systems, LNAV/VNAV NA below -1.6°C (4°F) or above 54°C (130°F). DME/DME RNP-0.3 NA. Helicopter visibility reduction below ¾ SM NA.

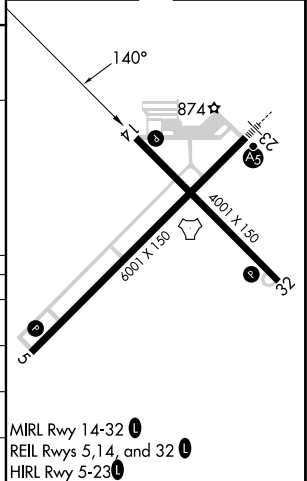
MISSED APPROACH: Climb to 3000 direct EKGOR and hold.

AWOS-3PT <b>128.675</b>	GRISSOM APP CON* <b>121.05 338.275</b>	CLNC DEL <b>120.0</b>	UNICOM <b>123.0 (CTAF)</b>
----------------------------	---	--------------------------	-------------------------------



ELEV 832	TDZE 826
----------	----------

CATEGORY	A	B	C	D
LPV DA		1076-1	250 (300-1)	
LNAV/VNAV DA		1199-1¼	373 (400-1¼)	
LNAV MDA		1200-1	374 (400-1)	
<b>C</b> CIRCLING	1260-1 428 (500-1)	1300-1 468 (500-1)	1400-1½ 568 (600-1½)	1640-2½ 808 (900-2½)



MIRL Rwy 14-32  
REIL Rwys 5, 14, and 32  
HIRL Rwy 5-23

EC-2, 15 MAY 2025 to 12 JUN 2025

EC-2, 15 MAY 2025 to 12 JUN 2025