

VOR RWY 35

VORTAC RQZ 112.2 Chan 59	APCH CRS 015°	Rwy Idg TDZE Arpt Elev 7300 661 685
----------------------------------------------	-------------------------	-------------------------------------------------------------------------

AL-703 [USA]

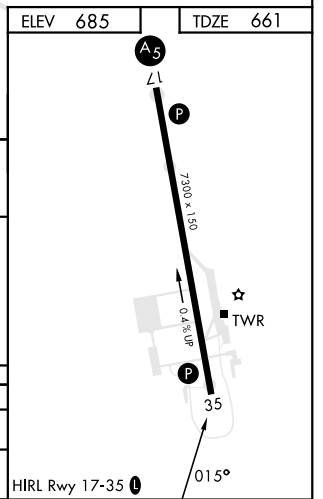
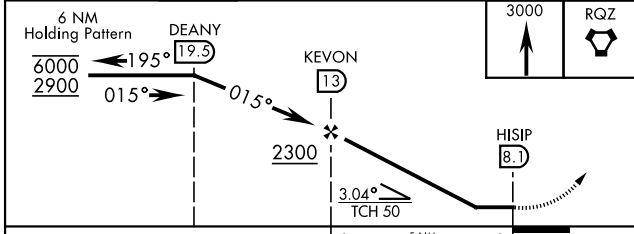
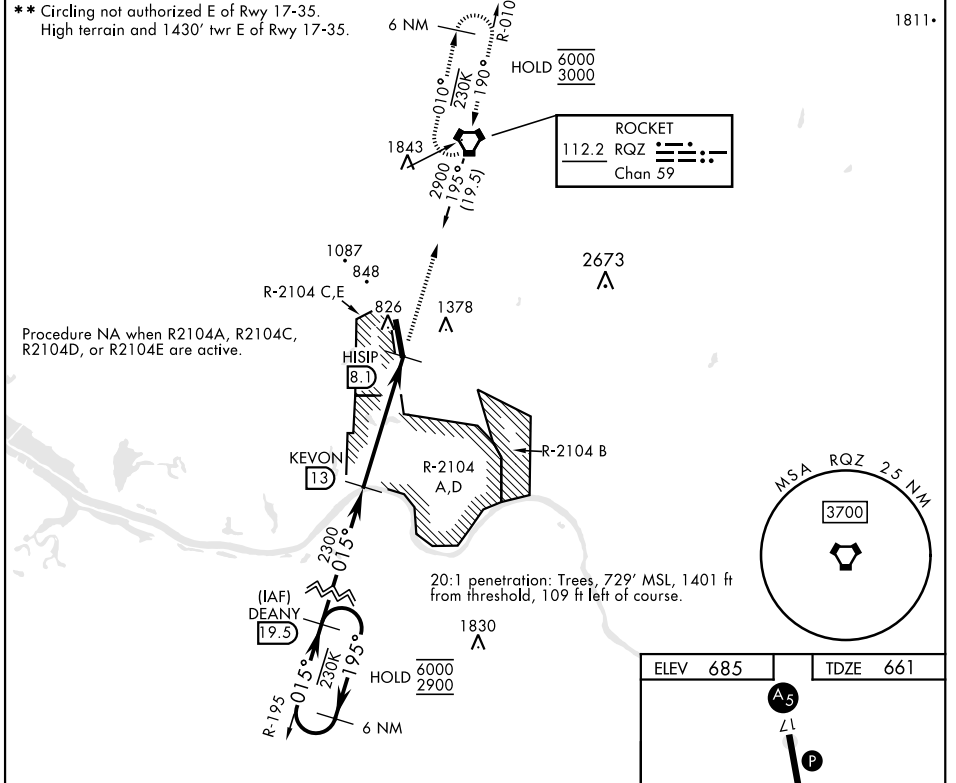
REDSTONE AAF (KHUA)

DME required

- ▼ * At night, operational VGSI required, remain on or above VGSI glidepath until threshold.
- ▲ Helicopter visibility reduction NA.

MISSED APPROACH: Climb to 3000 direct RQZ VORTAC and hold. Do not exceed 230 KIAS.

ATIS 120.65	HUNTSVILLE APP CON 125.6 354.1	TOWER * 126.95 (CTAF) 290.275	PAR
-----------------------	------------------------------------------	------------------------------------------------	-----



CATEGORY	A	B	C	D	E
S-35 *	1500-1 839 (900-1)	1500-1¼ 839 (900-1¼)	1500-2½	839	(900-2½)
■ CIRCLING **	1500-1¼	815 (900-1¼)	1500-2½ 815 (900-2½)	1740-3	1055 (1100-3)

VOR RWY 35

SE-4, 15 MAY 2025 to 12 JUN 2025

SE-4, 15 MAY 2025 to 12 JUN 2025