

WAAS CH 72705 W36A	APP CRS 005°	Rwy Idg TDZE Apt Elev	6499 809 813
--	------------------------	-----------------------------	---

RNAV (GPS) RWY 36

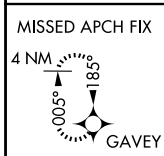
FINDLAY (F'DY)

RNP APCH-GPS.

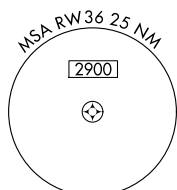
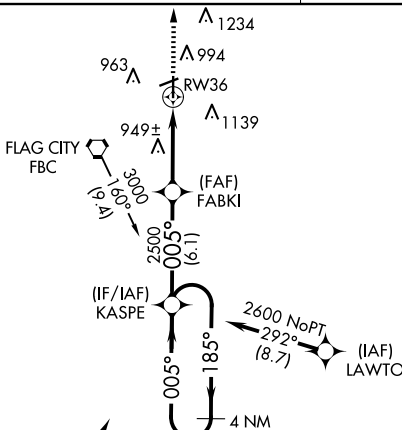
▼ For uncompensated Baro-VNAV systems, LNAV/VNAV NA below -16°C or above 47°C.
▲ Baro-VNAV and VDP NA when using Lima Allen County altimeter setting.
 When local altimeter setting not received, use Lima Allen County altimeter setting; increase all DAs/MDAs 80 feet; increase LNAV Cat C/D visibility 1/8 SM and Circling Cat C/D visibility 1/4 SM.
 Circling Rwy 7 NA at night.

MISSED APPROACH:
 Climb to 2500 direct GAVEY and hold.

ASOS 132.85	TOLEDO APP CON 120.8 317.55	UNICOM 122.725 (CTAF)
-----------------------	---------------------------------------	---------------------------------

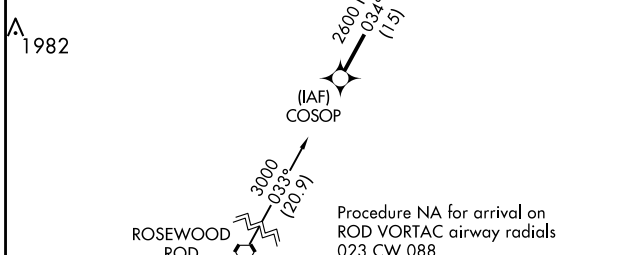


Procedure NA for arrival on FBC VORTAC airway radials 148 CW 200.



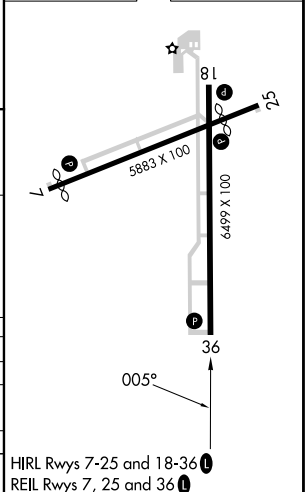
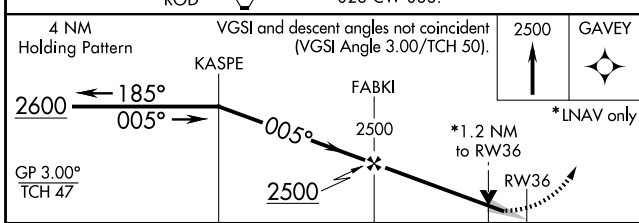
EC-2, 15 MAY 2025 to 12 JUN 2025

EC-2, 15 MAY 2025 to 12 JUN 2025



Procedure NA for arrival on ROD VORTAC airway radials 023 CW 088.

ELEV 813	D TDZE 809
----------	-------------------



CATEGORY	A	B	C	D
LPV DA	1106-1 297 (300-1)			
LNAV/VNAV DA	1229-1½ 420 (500-1½)			
LNAV MDA	1220-1 411 (500-1)	1220-1¼ 411 (500-1¼)		
CIRCLING	1440-1 627 (700-1)	1440-1¾ 627 (700-1¾)	1540-2¼ 727 (800-2¼)	

HIRL Rwy 7-25 and 18-36
 REIL Rwy 7, 25 and 36