

APP CRS	Rwy Idg	N/A
<b>335°</b>	TDZE	N/A
	Apt Elev	<b>617</b>

# RNAV (GPS)-B

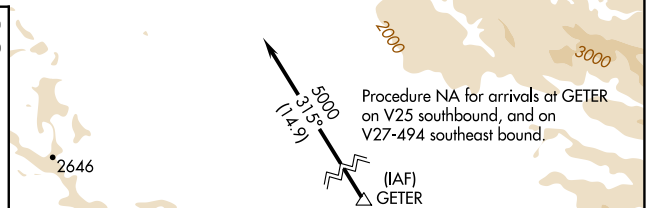
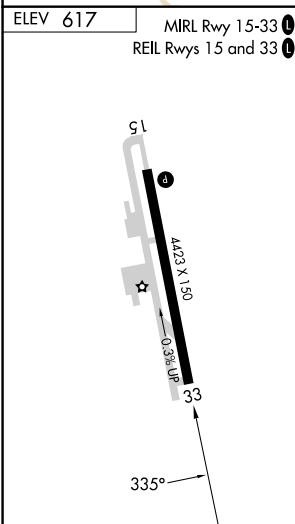
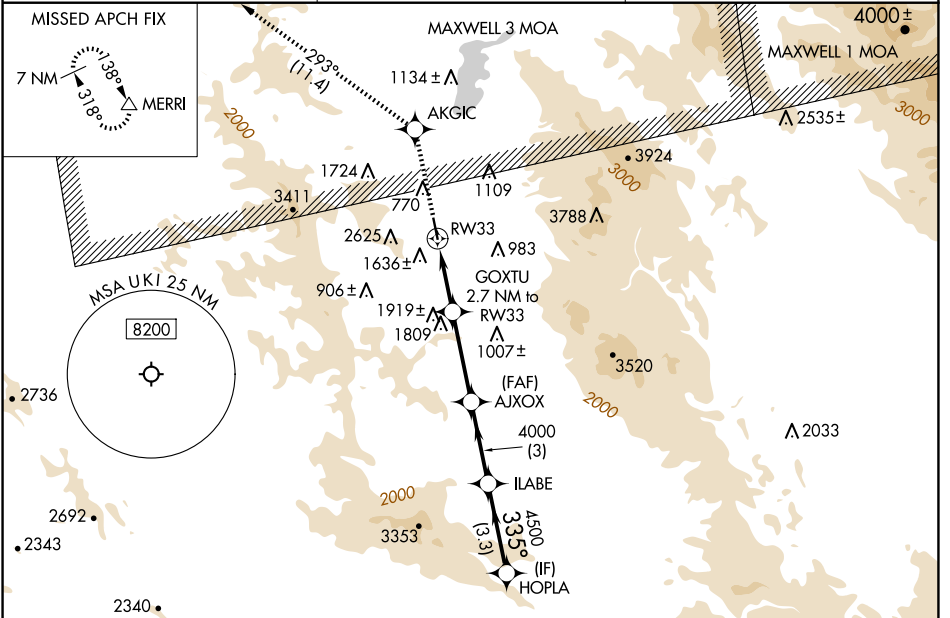
UKIAH MUNI (UKI)

RNP APCH - GPS.

**⚠** Circling NA southwest of Rwy 15-33. Circling Rwy 33 NA at night. Rwy 33 helicopter visibility reduction below 1 SM NA. When local altimeter setting not received, procedure NA.

**⚠** MISSED APPROACH: Climb to 6700 direct AKGIC and on track 293° to MERRI and hold, continue climb-in-hold to 6700.

ASOS <b>119.275</b>	OAKLAND CENTER <b>127.8 353.5</b>	UNICOM <b>123.0 (CTAF)</b>
------------------------	--------------------------------------	-------------------------------



6700	AKGIC	tr 293°	MERRI			HOPLA
				AJXOX	ILABE	5000
						335°
						4500
						4000
						2840
						2.7 NM
						3.3 NM
						3 NM
						3.3 NM
CATEGORY	A	B	C	D		
<b>ⓐ</b> CIRCLING	2080-1¼ 1463 (1500-1¼)	2100-1½ 1483 (1500-1½)	2140-3 1523 (1600-3)	2780-3 2163 (2200-3)		

SW-2, 15 MAY 2025 to 12 JUN 2025

SW-2, 15 MAY 2025 to 12 JUN 2025