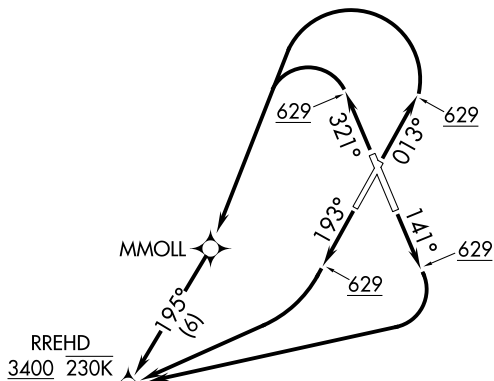


**TOP ALTITUDE:
FL230**

RNAV 1 - DME/DME/IRU or GPS.

OAKLAND CENTER
127.8 353.5

RADAR required for non-GPS equipped aircraft.



TAKEOFF MINIMUMS

Rwy 14: Standard.

Rwy 20: Standard with minimum climb of 216' per NM to 2300.

Rwy 2: Standard with minimum climb of 500' per NM to 629, then minimum climb of 330' per NM to 2300.

Rwy 32: Standard with minimum climb of 500' per NM to 629, then minimum climb of 380' per NM to 2300.

NOTE: Do not exceed 230K until passing RREHD.

NOTE: Chart not to scale.

DEPARTURE ROUTE DESCRIPTION

TAKEOFF RUNWAY 2: Climb on heading 013° to 629, then left turn direct MMOLL, then on depicted route, thence

TAKEOFF RUNWAY 14: Climb on heading 141° to 629, then right turn direct to cross RREHD at or above 3400 and at or below 230K, thence

TAKEOFF RUNWAY 20: Climb on heading 193° to 629, then right turn direct to cross RREHD at or above 3400 and at or below 230K, thence

TAKEOFF RUNWAY 32: Climb on heading 321° to 629, then left turn direct MMOLL, then on depicted route, thence

. . . .on assigned transition, maintain ATC assigned altitude, expect filed altitude 10 minutes after departure.

HADLY TRANSITION (RREHD1.HADLY)

NTELL TRANSITION (RREHD1.NTELL)