

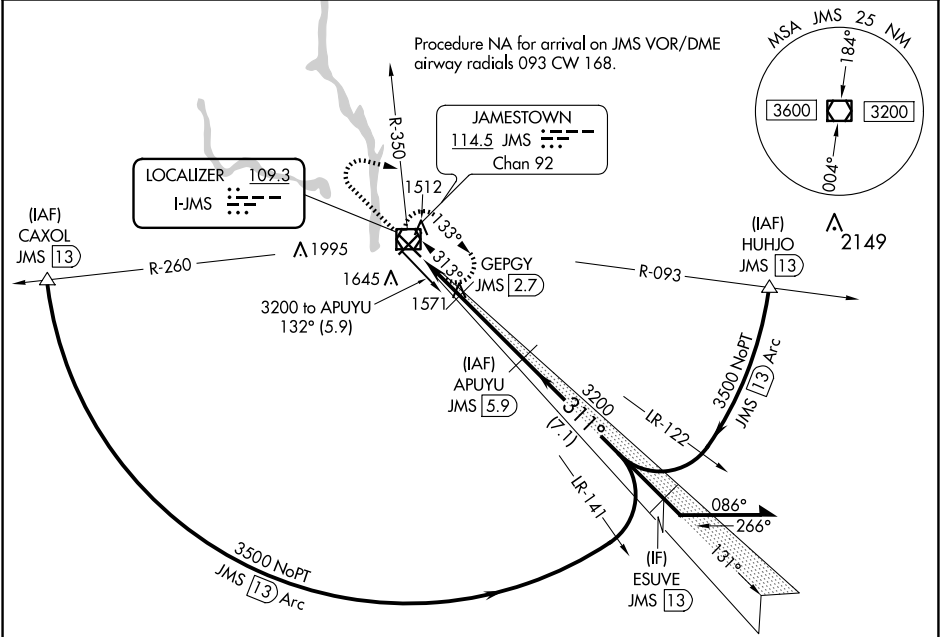
LOC I-JMS <b>109.3</b>	APP CRS <b>311°</b>	Rwy Idg <b>6502</b>
		TDZE <b>1498</b>
		Apt Elev <b>1500</b>

# ILS or LOC RWY 31

JAMESTOWN RGNL (JMS)

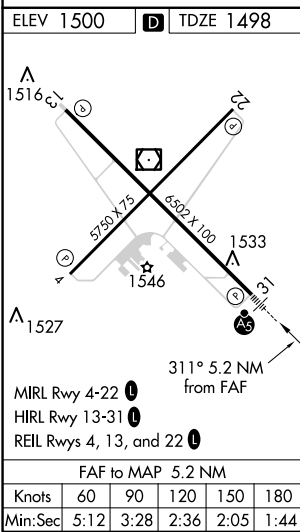
<p><b>▼</b> Autopilot coupled approach NA below 1900. DME required.</p> <p><b>▲ NA</b> DME from JMS VOR/DME. Simultaneous reception of I-JMS and JMS VOR/DME required.</p>	<p><b>MALSR</b></p>	<p><b>MISSED APPROACH:</b> Climb to 3200 then right turn heading 100° and on JMS VOR/DME R-350 to JMS VOR/DME and hold.</p>
--	---------------------	---

<p><b>ASOS</b> <b>118.425</b></p>	<p><b>MINNEAPOLIS CENTER</b> <b>124.2 270.3</b></p>	<p><b>UNICOM</b> <b>123.0 (CTAF) 0</b></p>
---------------------------------------	---	--



NC-1, 15 MAY 2025 to 12 JUN 2025

NC-1, 15 MAY 2025 to 12 JUN 2025



## DME REQUIRED

<p>3200</p> <p>↑</p> <p>hdg 100°</p> <p>JMS R-350</p> <p>JMS</p> <p>APUYU JMS 5.9</p> <p>Remain within 10 NM</p> <p>131°</p> <p>3200</p> <p>311°</p> <p>3200</p> <p>GS 3.00°</p> <p>TCH 50</p> <p>2180*</p> <p>1 NM</p> <p>1 NM</p> <p>3.2 NM</p>	<p>GEPGY JMS 2.7</p> <p>*JMS 1.8</p> <p>JMS 0.7</p>																									
<table border="1"> <thead> <tr> <th>CATEGORY</th> <th>A</th> <th>B</th> <th>C</th> <th>D</th> </tr> </thead> <tbody> <tr> <td>S-ILS 31</td> <td colspan="4">1698-½ 200 (200-½)</td> </tr> <tr> <td>S-LOC 31</td> <td>1880-½</td> <td>382 (400-½)</td> <td>1880-⅝</td> <td>382 (400-⅝)</td> </tr> <tr> <td><b>C</b> CIRCLING</td> <td>1960-1</td> <td>460 (500-1)</td> <td>2000-1½</td> <td>2300-2½</td> </tr> <tr> <td></td> <td></td> <td></td> <td>500 (500-½)</td> <td>800 (800-2½)</td> </tr> </tbody> </table>	CATEGORY	A	B	C	D	S-ILS 31	1698-½ 200 (200-½)				S-LOC 31	1880-½	382 (400-½)	1880-⅝	382 (400-⅝)	<b>C</b> CIRCLING	1960-1	460 (500-1)	2000-1½	2300-2½				500 (500-½)	800 (800-2½)	
CATEGORY	A	B	C	D																						
S-ILS 31	1698-½ 200 (200-½)																									
S-LOC 31	1880-½	382 (400-½)	1880-⅝	382 (400-⅝)																						
<b>C</b> CIRCLING	1960-1	460 (500-1)	2000-1½	2300-2½																						
			500 (500-½)	800 (800-2½)																						