

PRICE, UTAH

AL-681 (FAA)

23334

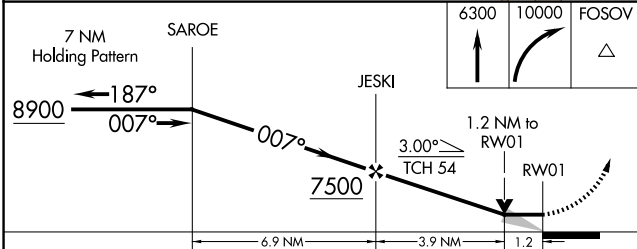
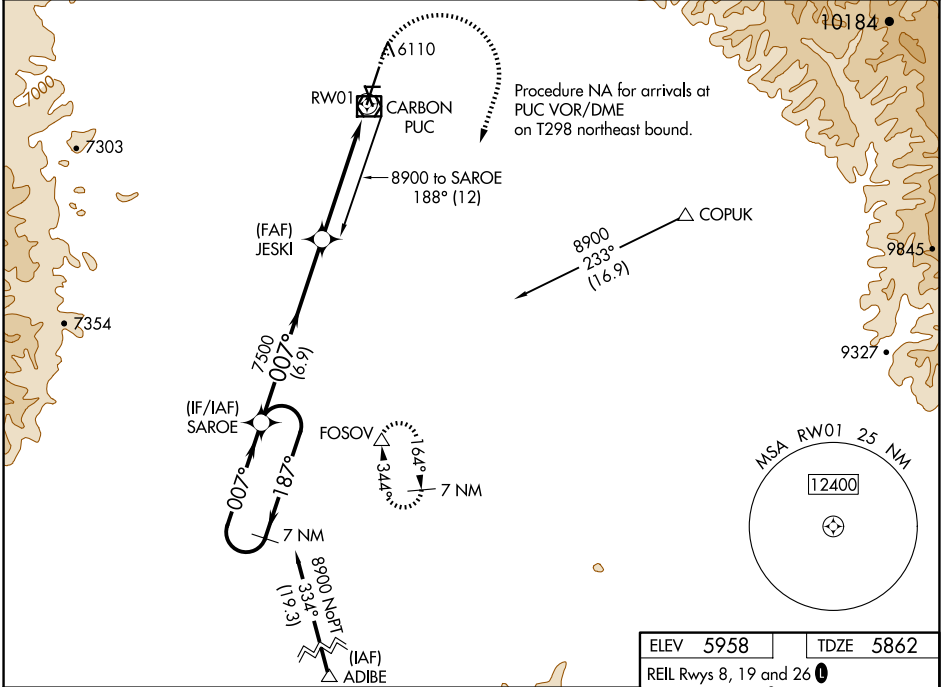
WAAS CH <b>78037</b> <b>W01A</b>	APP CRS <b>007°</b>	Rwy ldg TDZE Apt Elev	<b>8316</b> <b>5862</b> <b>5958</b>
--	------------------------	-----------------------------	---

# RNAV (GPS) RWY 1

CARBON COUNTY RGNL/BUCK DAVIS FLD (PUC)

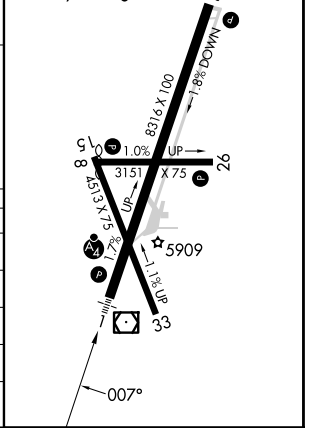
RNP APCH.	MALSF	MISSED APPROACH: Climb to 6300 then climbing right turn to 10000 direct FOSOV and hold, continue climb-in-hold to 10000. #Missed approach requires minimum climb of 296 feet per NM to 7500.
<p>⚠ Circling NA at night. For inoperative</p> <p>⚠ ALS increase LP Cat C/D visibility to 1 3/8 SM.</p>		

ASOS <b>135.425</b>	SALT LAKE CENTER <b>133.9 370.85</b>	UNICOM <b>122.8 (CTAF) 0</b>
------------------------	---	---------------------------------



ELEV 5958	TDZE 5862
-----------	-----------

REIL Rwy 8, 19 and 26 **0**  
 MRIL Rwy 15-33 **0**  
 HIRL Rwy 1-19 **0**



CATEGORY	A	B	C	D
LP MDA #	6240-3/4		378 (300-3/4)	
LNAV MDA #	6260-3/4	398 (400-3/4)	6260-7/8	398 (400-7/8)
LP MDA	6320-3/4	458 (400-3/4)	6320-1	458 (400-1)
LNAV MDA	6500-3/4	638 (600-3/4)	6500-1 1/2	638 (600-1 1/2)
<b>C</b> CIRCLING	6660-1 702 (800-1)	6860-1 1/4 902 (1000-1 1/4)	7120-3 1162 (1200-3)	NA

PRICE, UTAH  
Amdt 2A 24MAY18

CARBON COUNTY RGNL/BUCK DAVIS FLD (PUC)  
39°37'N-110°45'W

# RNAV (GPS) RWY 1

SW-4, 15 MAY 2025 to 12 JUN 2025

SW-4, 15 MAY 2025 to 12 JUN 2025