

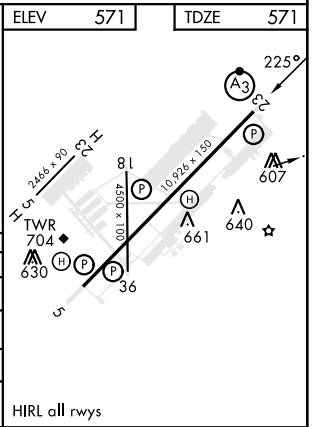
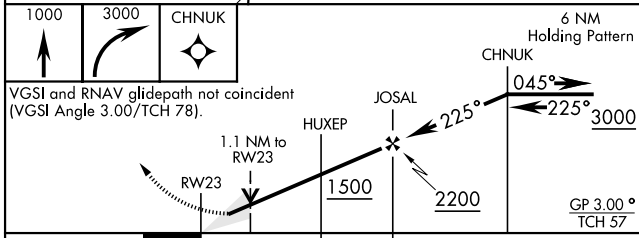
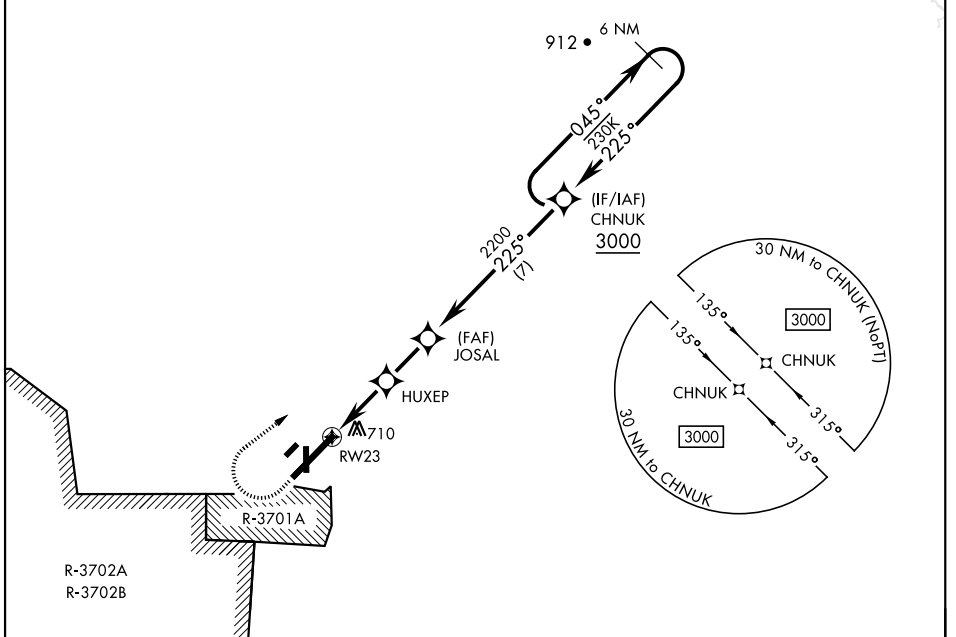
# RNAV (GPS) RWY 23

WAAS Chan <b>56203</b> <b>W23A</b>	APCH CRS <b>225°</b>	Rwy Idg <b>10,926</b> TDZE <b>571</b> Arprt Elev <b>571</b>	[USA]	CAMPBELL AAF (KHOP)
--	-------------------------	---	-------	---------------------

RNP APCH - GPS	SSALR <b>A3</b>	MISSED APPROACH: Climb to 1000 then climbing right turn to 3000 direct CHNUK and hold.
<p>▼ * When ALS inop, increase RVR to 40, vis to ¾ mile.</p> <p>** When ALS inop, increase RVR to 55, vis to 1 mile.</p> <p>*** When ALS inop, increase CAT AB RVR to 55, vis to 1 mile, CAT CDE RVR to 60, vis to 1½ miles.</p> <p>**** Circling not authorized SE of Rwy 5-23.</p>		

ATIS <b>125.175 308.4</b>	APP CON <b>118.1 269.525</b>	TOWER <b>120.9 278.8</b>	GND CON <b>121.8 266.8</b>	CLNC DEL <b>138.8</b>	ASR/PAR
------------------------------	---------------------------------	-----------------------------	-------------------------------	--------------------------	---------

For uncompensated BARO-VNAV systems, LNAV/VNAV NA below -19°C (-2°F) or above 54°C (130°F).



CATEGORY	A	B	C	D	E
LPV DA *	771/24		200	(200-½)	
LNAV/VNAV DA **	949/35		378	(400-¾)	
LNAV MDA ***	960/24	389 (400-½)	960/35		389 (400-¾)
CIRCLING ****	1060-1	489 (500-1)	1060-1½	1140-2	569 (600-2)

FORT CAMPBELL, KENTUCKY 36° 40' N - 87° 30' W CAMPBELL AAF (KHOP)

# RNAV (GPS) RWY 23

SE-1, 15 MAY 2025 to 12 JUN 2025

SE-1, 15 MAY 2025 to 12 JUN 2025