

NDB RWY 23

NDB FK 273	APCH CRS 225°	Rwy ldg 10,926 TDZE 571 Arprt Elev 571
----------------------	-------------------------	----------------------------------------------------------------------------

[USA]

CAMPBELL AAF (KHOP)

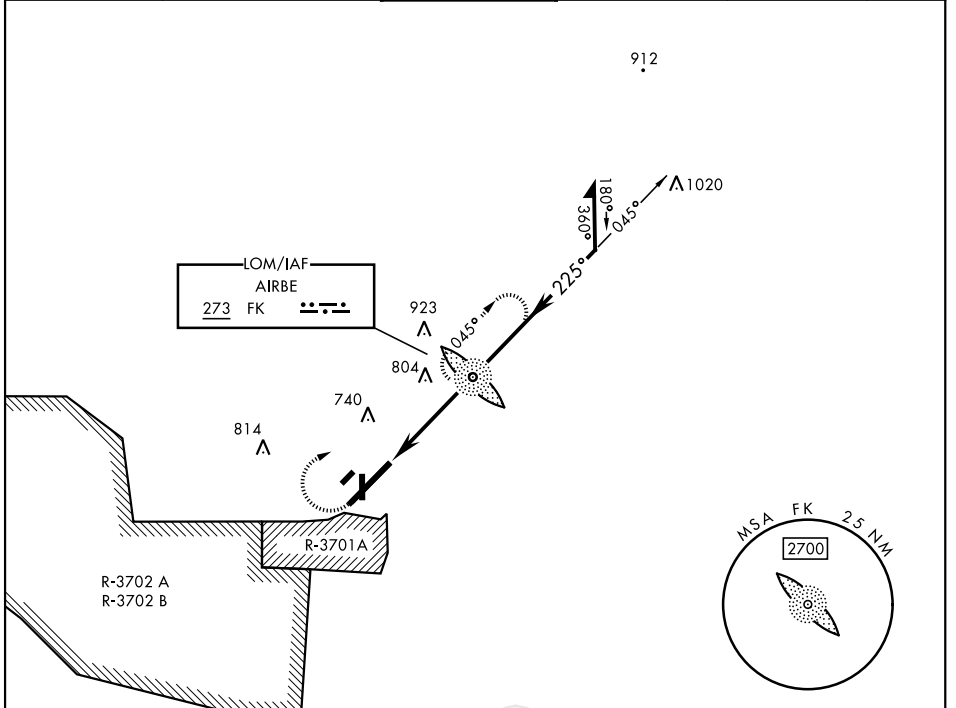
RADAR required

▼ * When ALS inop, increase CAT AB RVR to 55, vis to 1mile; CAT CD vis to 1 $\frac{1}{8}$ miles.
** Circling not authorized SE of Rwy 5-23.



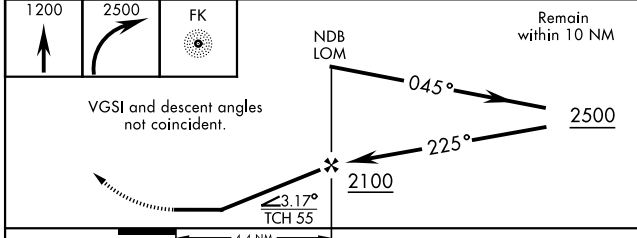
MISSED APPROACH: Climb to 1200, then climbing right turn to 2500 direct to FK LOM and continue climb-in-hold (max 230 KIAS).

ATIS 125.175 308.4	APP CON 118.1 269.525	TOWER 120.9 278.8	GND CON 121.8 266.8	CLNC DEL 138.8	ASR/PAR
------------------------------	---------------------------------	-----------------------------	-------------------------------	--------------------------	---------



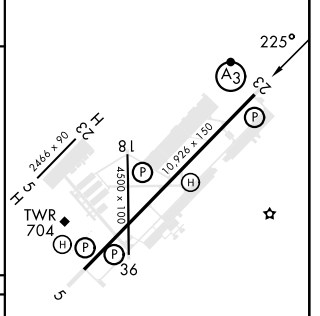
SE-1, 15 MAY 2025 to 12 JUN 2025

SE-1, 15 MAY 2025 to 12 JUN 2025



CATEGORY	A	B	C	D
S-23*	1120/40 549 (600- $\frac{3}{4}$)		1120/60 549 (600- $\frac{1}{2}$)	
CIRCLING**	1120-1 549 (600-1)		1120-1 $\frac{1}{8}$ 549 (600- $\frac{1}{8}$)	1140-2 569 (600-2)

ELEV 571	TDZE 571
----------	----------



	60	90	120	150	180
Knots	60	90	120	150	180
Min:Sec	4:24	2:56	2:12	1:46	1:28

NDB RWY 23