

FORT CAMPBELL, KENTUCKY

# ILS or LOC RWY 23

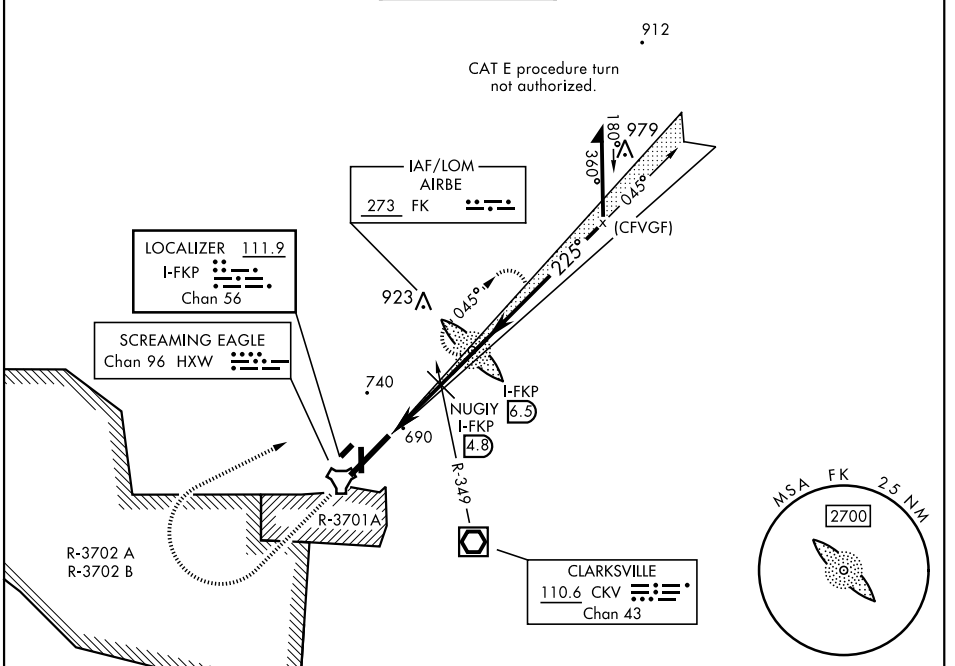
LOC/DME I-FKP <b>111.9</b> Chan <b>56</b>	APCH CRS <b>225°</b>	Rwy Idg <b>10,926</b> TDZE <b>571</b> Arpt Elev <b>571</b>
---	-------------------------	--

[USA]

CAMPBELL AAF (KHOP)

RADAR required	SSALR 	MISSED APPROACH: Climb to 1200 then climbing right turn to 2500 direct AIRBE LOM/I-FKP 6.5 DME, continue climb-in-hold to 2500 (max 230 KIAS).
<p>▼ * When ALS inop, increase RVR to 40, vis to 3/4 miles.                  ** When ALS inop, increase CAT AB RVR to 55, vis to 1 mile; CAT CDE RVR to 60, vis to 1 1/2 miles.                  *** Circling not authorized SE of Rwy 5-23.</p>		

ATIS <b>125.175 308.4</b>	APP CON <b>118.1 269.525</b>	TOWER <b>120.9 278.8</b>	GND CON <b>121.8 266.8</b>	CLNC DEL <b>138.8</b>	ASR/PAR
------------------------------	---------------------------------	-----------------------------	-------------------------------	--------------------------	---------



1200	2500	AIRBE	I-FKP 6.3	AIRBE LOM I-FKP 6.5	Remain within 10 NM
<p>VGSI and glidepath not coincident (VGSI Angle 3.00/TCH 78).</p> <p>NUGI I-FKP 4.8</p> <p>I-FKP 3.1</p> <p>I-FKP 2.1</p> <p>1480</p> <p>2000</p> <p>2200</p> <p>2500</p> <p>0.45°</p> <p>22.5°</p> <p>GS 3.00° TCH 57</p> <p>2.7 NM</p> <p>1.7 NM</p>					
CATEGORY	A	B	C	D	E
S-ILS 23 *	771/24		200	(200-1/2)	
S-LOC 23 **	960/24	389 (400-1/2)	960/35	389	(400-3/8)
CIRCLING ***	1060-1	489 (500-1)	1060-1 1/2 489 (500-1/2)	1140-2	569 (600-2)

ELEV	571	TDZE	571
HIRL all rwys			
FAF to MAP 4.4 NM			
Knots	60	90	120 150 180
Min:Sec	4:24	2:56	2:12 1:46 1:28

FORT CAMPBELL, KENTUCKY

36° 40' N - 87° 30' W

CAMPBELL AAF (KHOP)

Amdt 14 10AUG23

# ILS or LOC RWY 23

SE-1, 15 MAY 2025 to 12 JUN 2025

SE-1, 15 MAY 2025 to 12 JUN 2025