

WAAS CH <b>63002</b> <b>W22A</b>	APP CRS <b>219°</b>	Rwy Idg <b>6153</b> TDZE <b>17</b> Apt Elev <b>18</b>
--	------------------------	---

# RNAV (GPS) RWY 22

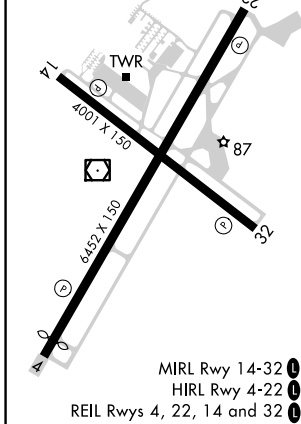
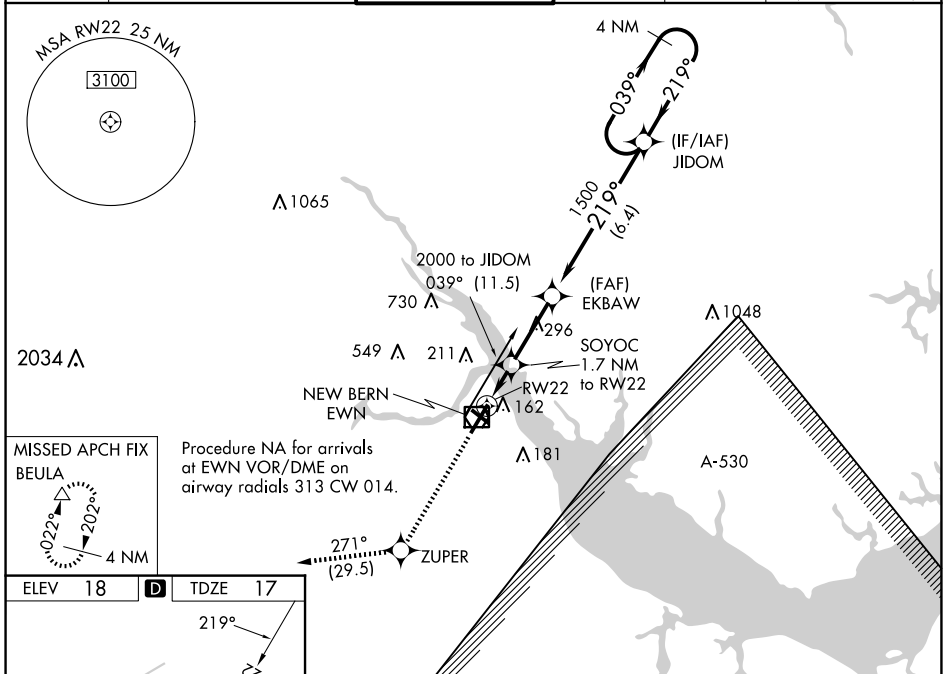
COASTAL CAROLINA RGNL (E'WN)

RNP APCH.

**⚠** Rwy 14, 32 helicopter visibility reduction below 1 SM NA. Rwy 22 helicopter visibility reduction below 3/4 SM NA. Circling Rwy 14, 32 NA at night. Baro-VNAV NA when using Cherry Point altimeter setting. For uncompensated Baro-VNAV systems, LNAV/VNAV NA below -15°C (5°F) or above 54°C (130°F). When local altimeter setting not received, use Cherry Point altimeter setting; increase all DA 32 feet and all MDA 40 feet. Increase LPV and LNAV/VNAV visibility 1/2 SM, and Circling Cat C/D visibility 1/4 SM.

**MISSED APPROACH:**  
Climb to 3000 direct ZUPER and on track 271° to BEULA and hold.

ASOS <b>118.525</b>	CHERRY POINT APP CON <b>119.35 374.9</b>	NEW BERN TOWER ★ <b>124.25</b> (CTAF) <b>0</b>	GND CON <b>121.7</b>	CLNC DEL <b>121.7</b>	CLNC DEL <b>120.525</b> (when twr closed)
------------------------	---	---	-------------------------	--------------------------	---



ELEV 18	<b>D</b>	TDZE 17		
3000	ZUPER	tr 271°	BEULA	4 NM Holding Pattern
*LNAV only.		SOYOC 1.7 NM to RW22	EKBAW 1500	JIDOM
RW22		*580	1500	039° → 2000
← 1.7 NM		← 2.9 NM	← 6.4 NM	← 219° ← 2000
				GP 3.00° TCH 31
CATEGORY	A	B	C	D
LPV DA		269-7/8	252 (300-7/8)	
LNAV/VNAV DA		376-1 1/4	359 (400-1 1/4)	
LNAV MDA	480-1	463 (500-1)	480-1 3/8	463 (500-1 3/8)
<b>C</b> CIRCLING	480-1 462 (500-1)	520-1 502 (600-1)	600-1 1/2 582 (600-1 1/2)	860-2 3/4 842 (900-2 3/4)

SE-2, 15 MAY 2025 to 12 JUN 2025

SE-2, 15 MAY 2025 to 12 JUN 2025