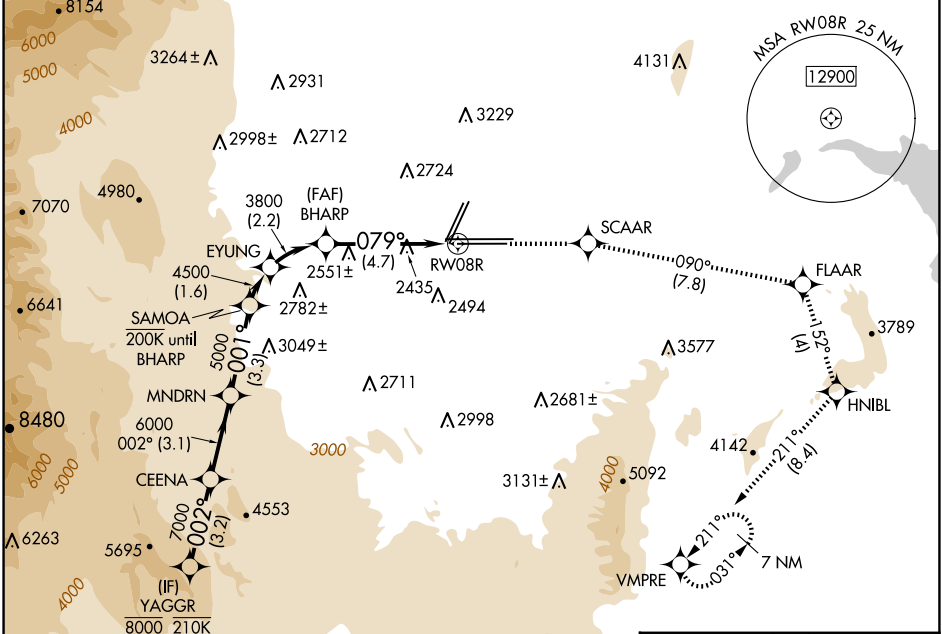


APP CRS	Rwy ldg <b>10526</b>
<b>079°</b>	TDZE <b>2157</b>
	Apt Elev <b>2181</b>

# RNAV (RNP) RWY 8R

HARRY REID INTL (LAS)

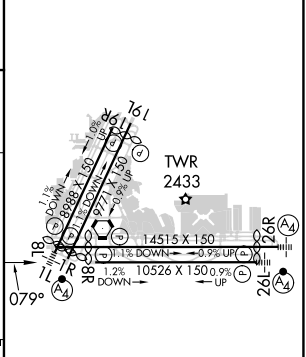
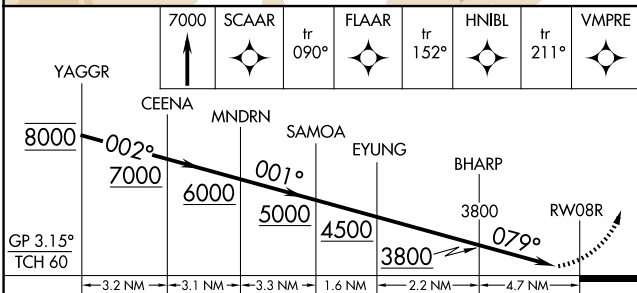
RNP AR APCH. RF required.		MISSED APPROACH: Climb to 7000 on the RNAV missed approach route to VMPRE and hold, continue climb-in-hold to 7000.			
▼ For uncompensated Baro-VNAV systems, procedure NA below 0°C or above 54°C.					
D-ATIS	LAS VEGAS APP CON	LAS VEGAS TOWER		GND CON	CLNC DEL
<b>132.4</b>	<b>125.025 379.15</b> (West) <b>119.775 282.2</b> (East)	<b>118.75 257.8</b> (Rwy 1L/19R, 1R/19L) <b>119.9 257.8</b> (Rwy 8L/26R, 8R/26L)		<b>121.1 270.8</b> E of 1R/19L <b>121.9 254.3</b> W of 1L/19R	<b>118.0</b>
					CPDLC



SW-4, 15 MAY 2025 to 12 JUN 2025

SW-4, 15 MAY 2025 to 12 JUN 2025

ELEV 2181	<b>D</b> TDZE 2157
-----------	--------------------



CATEGORY	A	B	C	D
RNP 0.10 DA		2544-1 1/8	387 (400-1 1/8)	
RNP 0.30 DA		2613-1 3/8	456 (500-1 3/8)	

## AUTHORIZATION REQUIRED

MIRL Rwy 1R-19L  
 REIL Rwys 1R, 8R, 19L and 19R  
 HIRL Rwys 1L-19R, 8L-26R and 8R-26L