

# TUCKERNUCK VISUAL RWY 6

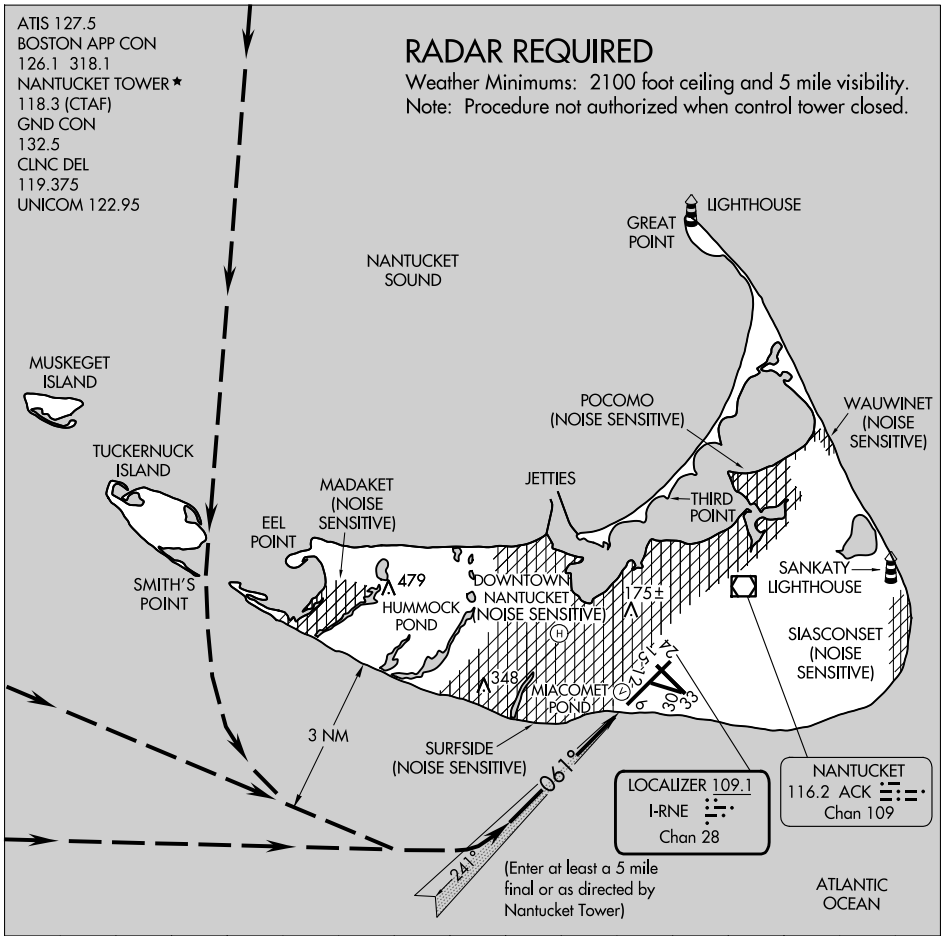
AL-659 (FAA)

NANTUCKET MEML (ACK)  
NANTUCKET, MASSACHUSETTS

ATIS 127.5  
 BOSTON APP CON  
 126.1 318.1  
 NANTUCKET TOWER ★  
 118.3 (CTAF)  
 GND CON  
 132.5  
 CLNC DEL  
 119.375  
 UNICOM 122.95

## RADAR REQUIRED

Weather Minimums: 2100 foot ceiling and 5 mile visibility.  
 Note: Procedure not authorized when control tower closed.



NE-1, 15 MAY 2025 to 12 JUN 2025

NE-1, 15 MAY 2025 to 12 JUN 2025

1 NM	2	3	4	5	6	7	8	9	10	11	12	13	14	15
------	---	---	---	---	---	---	---	---	----	----	----	----	----	----

# TUCKERNUCK VISUAL RWY 6

Amdt 1 22NOV99

41°15'N-70°04'W

NANTUCKET, MASSACHUSETTS  
NANTUCKET MEML (ACK)