

WAAS CH <b>77835</b> <b>W33A</b>	APP CRS <b>331°</b>	Rwy Idg <b>4500</b> TDZE <b>41</b> Apt Elev <b>47</b>
--	------------------------	---

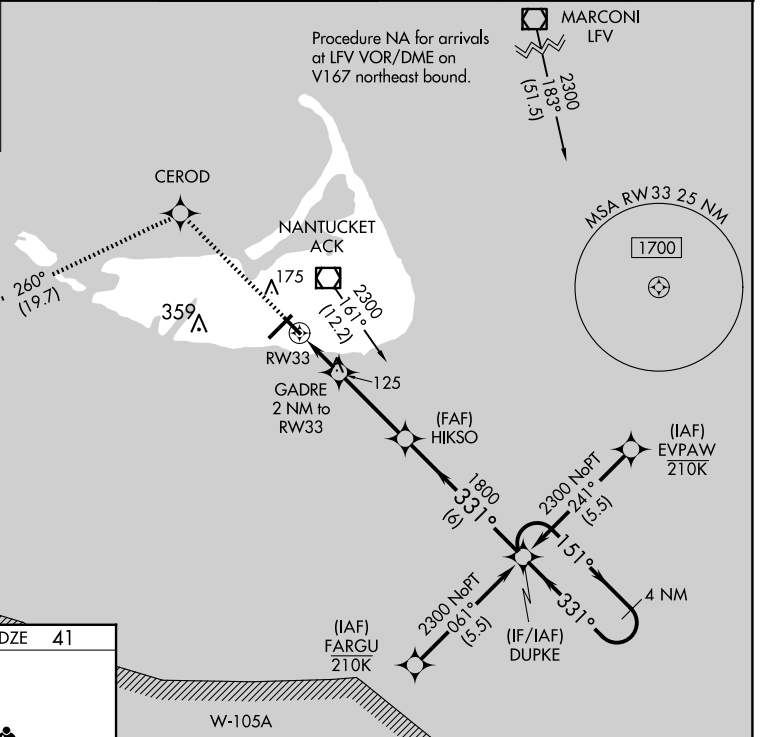
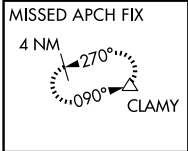
# RNAV (GPS) RWY 33

NANTUCKET MEML (ACK)

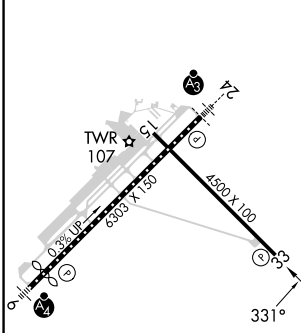
**⚠** Baro-VNAV NA when using Hyannis altimeter setting. For uncompensated Baro-VNAV systems, LNAV/VNAV NA below -11°C (13°F) or above 54°C (130°F). When local altimeter setting not received, use Hyannis altimeter setting; increase all DA 63 feet and all MDA 80 feet; increase LNAV Cats C and D visibility 1/8 mile and Circling Cat C visibility 1/4 mile. DME/DME RNP-0.3 NA.

**⚠** MISSED APPROACH: Climb to 2500 direct CEROD and on track 260° to CLAMY and hold.

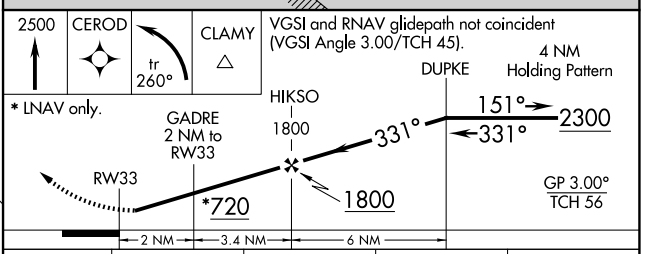
ATIS <b>127.5</b>	BOSTON APP CON <b>126.1 318.1</b>	NANTUCKET TOWER * <b>118.3 (CTAF) 0</b>	GND CON <b>132.5</b>	CLNC DEL <b>119.375</b>	UNICOM <b>122.95</b>
----------------------	--------------------------------------	--	-------------------------	----------------------------	-------------------------



ELEV 47	<b>D</b>	TDZE 41
---------	----------	---------



TDZ/CL Rwy 24  
REIL Rwys 15 and 33  
MIRL Rwy 15-33 **0**  
HIRL Rwy 6-24 **0**



CATEGORY	A	B	C	D
LPV DA		291-1	250 (300-1)	
LNAV/VNAV DA		301-1	260 (300-1)	
LNAV MDA		380-1	339 (400-1)	
<b>C</b> CIRCLING	480-1 433 (500-1)	500-1 453 (500-1)	720-2 673 (700-2)	1000-3 953 (1000-3)

NE-1, 15 MAY 2025 to 12 JUN 2025

NE-1, 15 MAY 2025 to 12 JUN 2025