

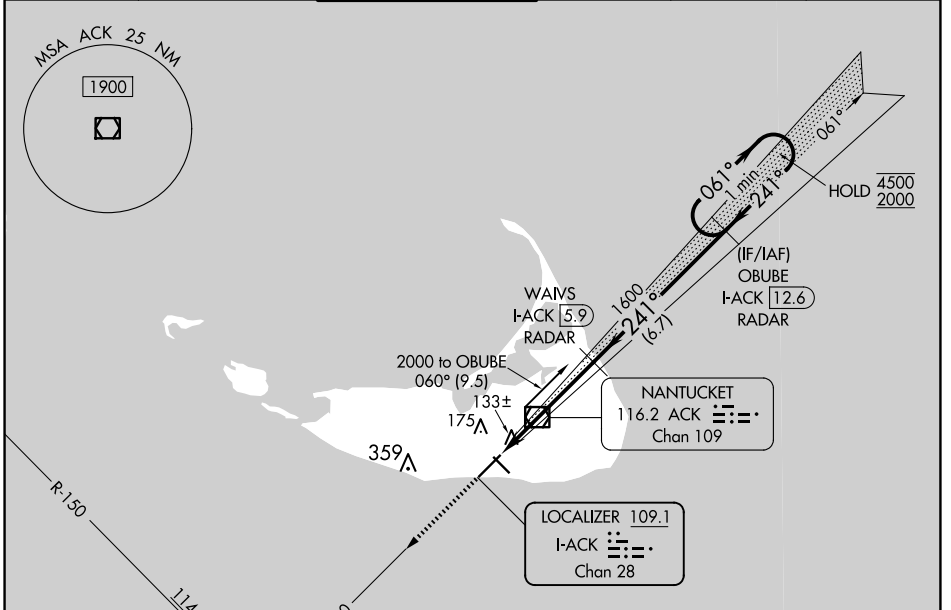
LOC/DME I-ACK 109.1 Chan 28	APP CRS 241°	Rwy Idg TDZE Apt Elev	6303 47 47
---	------------------------	-----------------------------	---------------------------------------

ILS RWY 24 (SA CAT I)

NANTUCKET MEML (ACK)

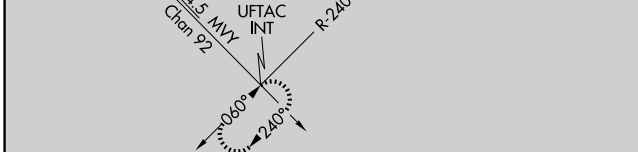
DME or RADAR required.		SSALR 	MISSED APPROACH: Climb to 2300 on ACK VOR/DME R-240 direct UFTAC INT and hold.
Procedure NA when control tower closed. Requires specific OPSPEC, MSPEC, or LOA approval.			

ATIS 127.5	BOSTON APP CON 126.1 318.1	NANTUCKET TOWER ★ 118.3 (CTAF) 0	GND CON 132.5	CLNC DEL 119.375	UNICOM 122.95
----------------------	--------------------------------------	--	-------------------------	----------------------------	-------------------------

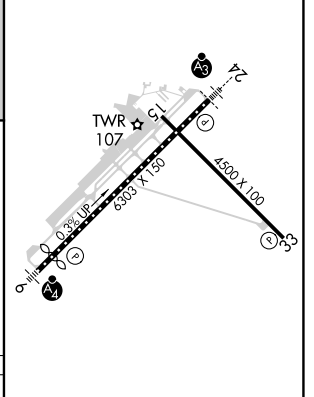
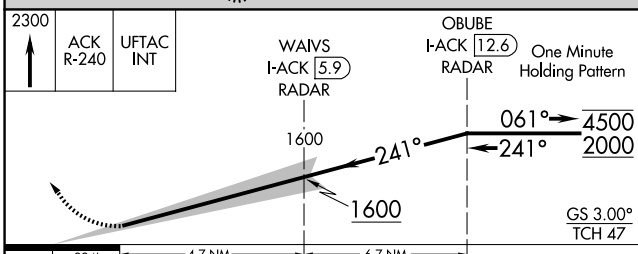


NE-1, 15 MAY 2025 to 12 JUN 2025

NE-1, 15 MAY 2025 to 12 JUN 2025



ELEV 47	D	TDZE 47
---------	----------	---------



CATEGORY	A	B	C	D
S-ILS 24	RA 141/14 150		DA 197	

SA CAT I ILS - SPECIAL AIRCREW & AIRCRAFT CERTIFICATION REQUIRED

TDZ/CL Rwy 24	HIRL Rwy 6-24 0	MIRL Rwy 15-33 0	REIL Rwys 15 and 33
---------------	-----------------	------------------	---------------------