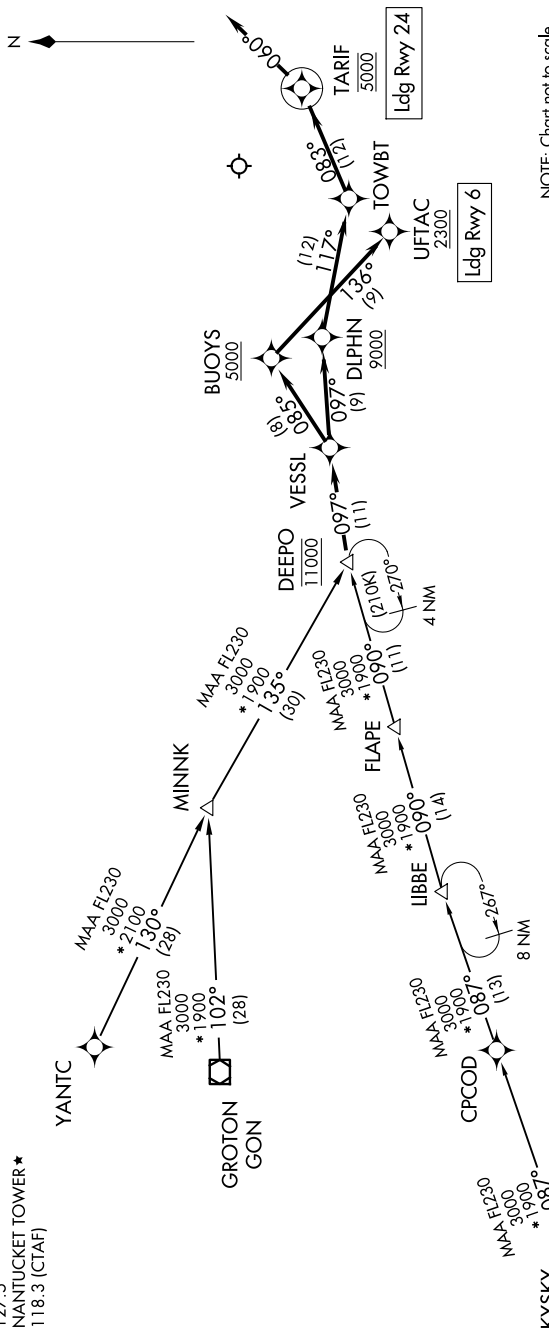


DEEPO TWO ARRIVAL (RNAV)

NE-1, 15 MAY 2025 to 12 JUN 2025

BOSTON APP CON
133.75 318.1
ATIS
127.5
NANTUCKET TOWER *
118.3 (CTAF)

RNAV 1 - DME/DME/IRU or GPS
RADAR required



GROTON TRANSITION (GON.DEEPO2)
KYSKY TRANSITION (KYSKY.DEEPO2)
YANTIC TRANSITION (YANTIC.DEEPO2)

From DEEPO on track 097° to VESSL.

LANDING RUNWAY 6: From VESSL on track 085° to cross BUOYS at or above 5000, then on track 136° to cross UFTAC at or above 2300. Expect ILS or LOC RWY 6 approach.
LANDING RUNWAY 24: From VESSL on track 097° to cross DLPNH at or above 9000, then on track 117° to TOWBT, then on track 083° to cross TARIF at 5000, then on track 060°. Expect RADAR vectors to final approach course.

NE-1, 15 MAY 2025 to 12 JUN 2025