

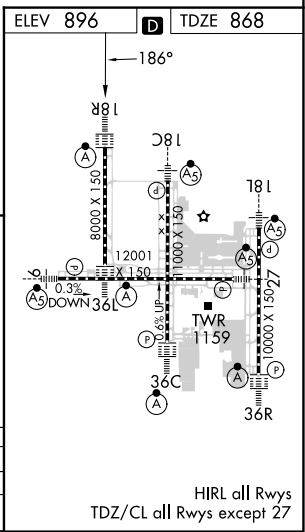
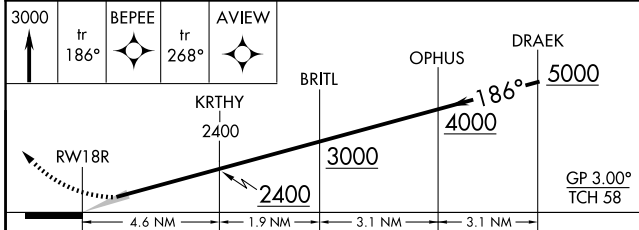
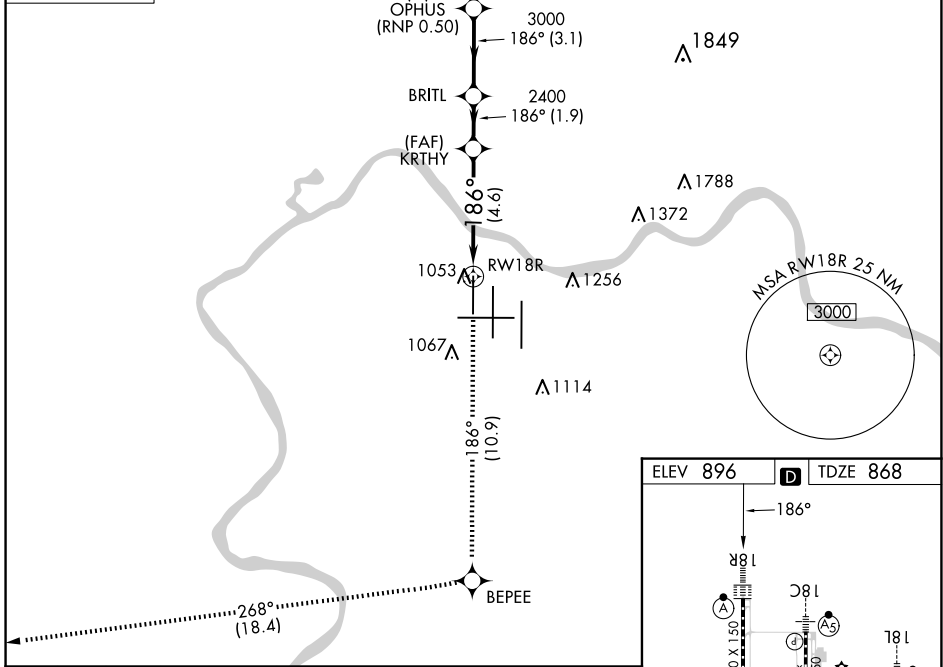
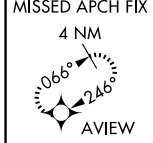
| | | |
|-------------|----------|-------------|
| APP CRS | Rwy Idg | 8000 |
| 186° | TDZE | 868 |
| | Apt Elev | 896 |

RNAV (RNP) Z RWY 18R

CINCINNATI/NORTHERN KENTUCKY INTL (CVG)

| | | |
|--|--------|--|
| RNP AR APCH - GPS. | ALSF-2 | MISSED APPROACH: Climb to 3000 on track 186° BEPEE and on track 268° to AVIEW and hold. |
| <p>▼ Use of FD or AP required during simultaneous operations. Simultaneous approach authorized with Rwy 18C/L. For uncompensated Baro-VNAV systems, procedure NA below -17°C or above 54°C. For inop ALS, increase RNP 0.30 all Cats visibility to RVR 6000.</p> | | |

| | | | | | |
|-------------------------------------|--|---|--------------|----------------|-------|
| D-ATIS | CINCINNATI APP CON | CINCINNATI TOWER | GND CON | CLNC DEL | CPDLC |
| ARR 134.375 DEP 135.3 | 119.7 363.15 (090°-269°) 123.875 363.15 (270°-089°) | 118.975 360.85 (RWY 18L/36R) 118.3 (RWYS 18C/36C, 09/27) 133.325 (RWY 18R/36L) | 121.7 | 127.175 | |



| | | | | |
|-------------|---|---------|-------------|---|
| CATEGORY | A | B | C | D |
| RNP 0.30 DA | | 1287/40 | 419 (400-¾) | |

AUTHORIZATION REQUIRED

SE-1, 15 MAY 2025 to 12 JUN 2025

SE-1, 15 MAY 2025 to 12 JUN 2025