

(KENLN6.KENLN) 24081

KENLN SIX DEPARTURE (RNAV)

CINCINNATI/NORTHERN KENTUCKY INTL (CVG)

AL-655 (FAA)

COVINGTON, KENTUCKY

CINCINNATI DEP CON
 126.65 254.25 (001°-180°)
 128.7 254.25 (181°-360°)
 D-ATIS DEP 135.3
 CLNC DEL 127.175
 CPDLC
 GND CON 121.7
 CINCINNATI TOWER
 118.3 (RWYS 18C/36C, 9/27)
 118.975 360.85 (RWY 18L/36R)
 133.325 (RWY 18R/36L)

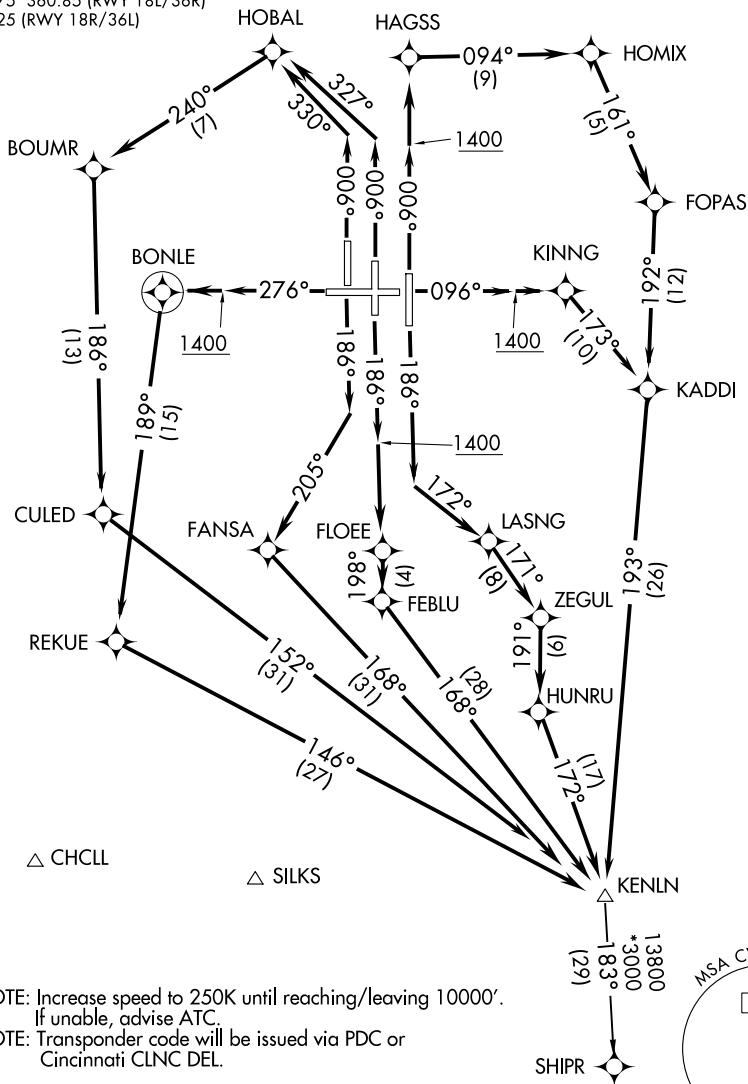
RNAV 1 - DME/DME/IRU or GPS.

RADAR required for non-GPS equipped aircraft.

**TOP ALTITUDE:
(JETS) 5000/(PROPS) 4000**

TAKEOFF MINIMUMS

Rwys 9, 18L/C/R, 27, 36L/C/R: Standard.



NOTE: Increase speed to 250K until reaching/leaving 10000'.

If unable, advise ATC.

NOTE: Transponder code will be issued via PDC or Cincinnati CLNC DEL.

NOTE: Chart not to scale.

(CONTINUED ON FOLLOWING PAGE)

KENLN SIX DEPARTURE (RNAV)

(KENLN6.KENLN) 21MAR24

COVINGTON, KENTUCKY

CINCINNATI/NORTHERN KENTUCKY INTL (CVG)

SE-1, 15 MAY 2025 to 12 JUN 2025

SE-1, 15 MAY 2025 to 12 JUN 2025