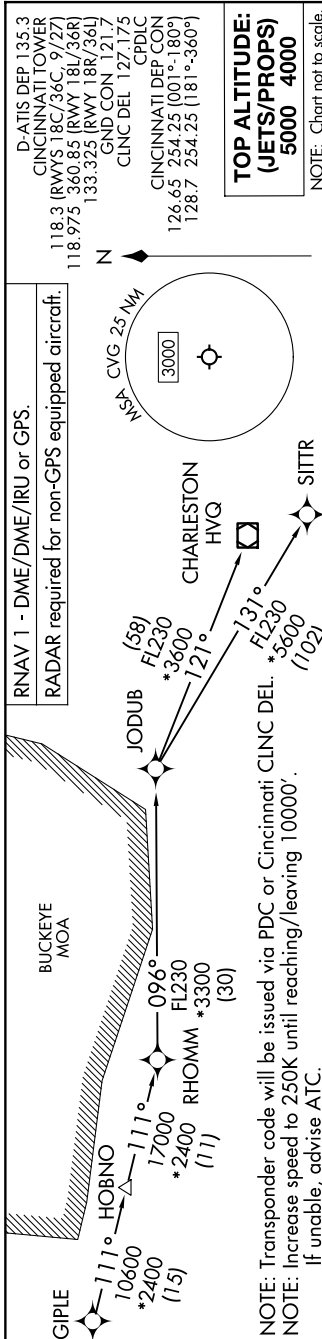


GIPLE SEVEN DEPARTURE (RNAV) Transition Route

SE-1, 15 MAY 2025 to 12 JUN 2025



**TOP ALTITUDE:  
(JETS/PROPS)  
5000 4000**

NOTE: Chart not to scale.

RNAV 1 - DME/DME/IRU or GPS.  
RADAR required for non-GPS equipped aircraft.

NOTE: Transponder code will be issued via PDC or Cincinnati CLNC DEL. \*5600\*  
NOTE: Increase speed to 250K until reaching/leaving 10000'.  
If unable, advise ATC.

DEPARTURE ROUTE DESCRIPTION

**TAKEOFF RUNWAY 9:** Climb on heading 096° to 1400, then direct KINNG, then on track 122° to GIPLE, thence ...  
**TAKEOFF RUNWAY 18L:** Climb on heading 171° to 1400, then on track 108° to LASNG, then on track 108° to CODKO, then on track 105° to GIPLE, thence ...  
**TAKEOFF RUNWAY 18C:** Climb on heading 186° to 1400, then direct FLOEE, then on track 105° to CODKO, then on track 105° to GIPLE, thence ...  
**TAKEOFF RUNWAY 18R:** Climb on heading 186° to intercept course 202° to FANSA, then on track 158° to HIPAS, then on track 096° to GIPLE, thence ...  
**TAKEOFF RUNWAY 27:** Climb on heading 276° to 1400, then direct BONLE, then on track 189° to REKUE, then on track 149° to WIMDI, then on track 079° to GIPLE, thence ...  
**TAKEOFF RUNWAY 36L:** Climb on heading 006° to intercept course 325° to RORFE, then on track 053° to SUVBE, then on track 121° to HOMIX, then on track 137° to GIPLE, thence ...  
**TAKEOFF RUNWAY 36C:** Climb on heading 006° to intercept course 325° to RORFE, then on track 053° to SUVBE, then on track 121° to HOMIX, then on track 137° to GIPLE, thence ...  
**TAKEOFF RUNWAY 36R:** Climb on heading 006° to 1400, then direct HAGSS, then on track 094° to HOMIX, then on track 137° to GIPLE, thence ...

...turbojets: maintain 5000, all other aircraft: maintain 4000. Expect clearance to filed altitude within ten minutes after departure.

CHARLESTON TRANSITION (GIPLE7.HVQ):  
 JODUB TRANSITION (GIPLE7.JODUB):  
 SITTR TRANSITION (GIPLE7.SITTR):

SE-1, 15 MAY 2025 to 12 JUN 2025