

(GAVNN.GAVNN7) 24081

AL-655 (FAA)

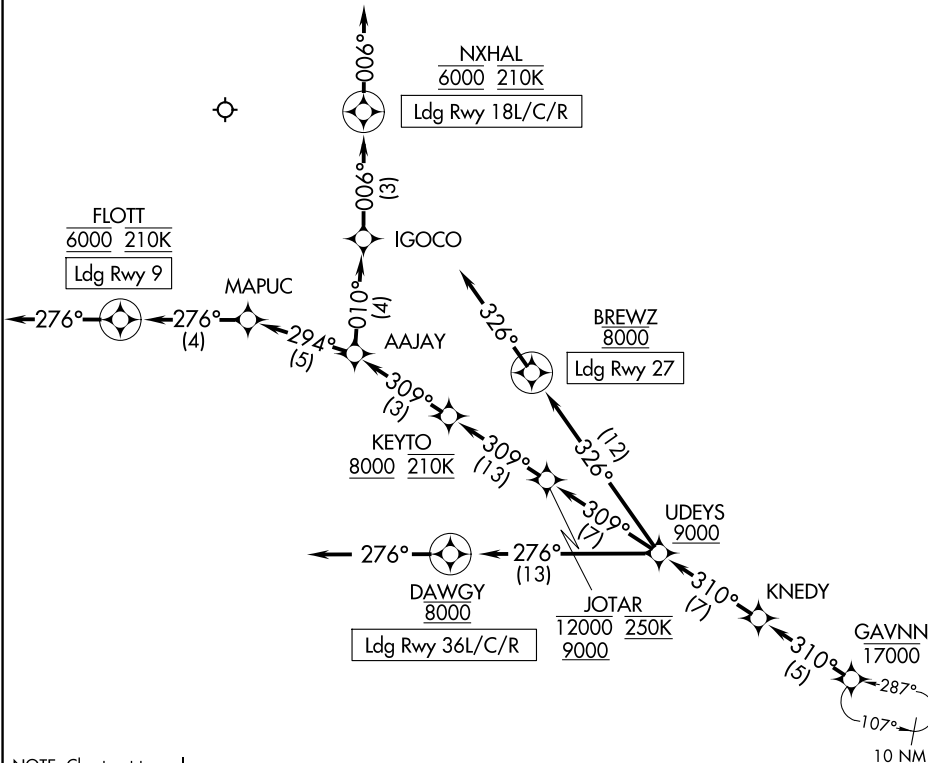
CINCINNATI/NORTHERN KENTUCKY INTL (CVG)

# GAVNN SEVEN ARRIVAL (RNAV) Arrival Routes

COVINGTON, KENTUCKY

CINCINNATI APP CON  
119.7 363.15 (090°-269°)  
123.875 363.15 (270°-089°)  
D-ATIS  
134.375

RNAV 1 - DME/DME/IRU or GPS.  
RADAR required.



SE-1, 15 MAY 2025 to 12 JUN 2025

SE-1, 15 MAY 2025 to 12 JUN 2025

NOTE: Chart not to scale.

## ARRIVAL ROUTE DESCRIPTION

From GAVNN on track 310° to KNEDY, then on track 310° to UDEYS at or above 9000.

**LANDING RUNWAY 9:** From UDEYS on track 309° to cross JOTAR between 9000 and 12000 and at 250K, then on track 309° to cross KEYTO at or above 8000 and at 210K, then on track 309° to AAJAY, then on track 294° to MAPUC, then on track 276° to cross FLOTT at 6000 and at 210K, then on track 276°.

Expect RADAR vectors to final approach course.

**LANDING RUNWAYS 18L/C/R:** From UDEYS on track 309° to cross JOTAR between 9000 and 12000 and at 250K, then on track 309° to cross KEYTO at or above 8000 and at 210K, then on track 309° to AAJAY, then on track 010° to IGOCO, then on track 006° to cross NXHAL at 6000 and at 210K, then on track 006°.

Expect RADAR vectors to final approach course.

**LANDING RUNWAY 27:** From UDEYS on track 326° to cross BREWZ at 8000, then on track 326°. Expect RADAR vectors to final approach course.

**LANDING RUNWAYS 36L/C/R:** From UDEYS on track 276° to cross DAWGY at 8000, then on track 276°. Expect RADAR vectors to final approach course.

GAVNN SEVEN ARRIVAL (RNAV) Arrival Routes

COVINGTON, KENTUCKY

(GAVNN.GAVNN7) 21MAR24

CINCINNATI/NORTHERN KENTUCKY INTL (CVG)