

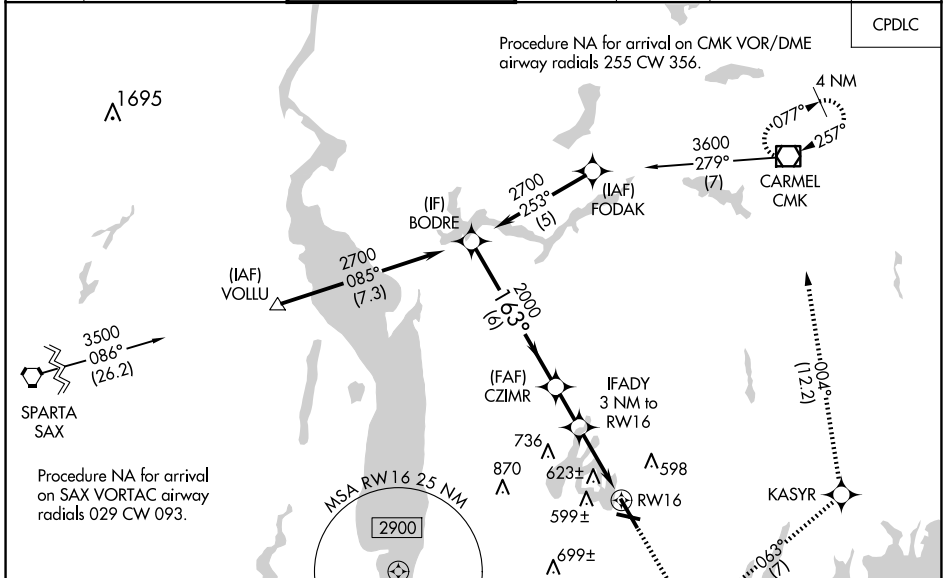
WAAS CH 69519 W16A	APP CRS 163°	Rwy Idg TDZE 439 Apt Elev 439
--	------------------------	---

RNAV (GPS) Y RWY 16

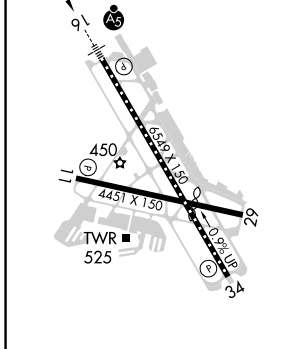
WESTCHESTER COUNTY (HPN)

<p>⚠ For uncompensated Baro-VNAV systems, LNAV/VNAV NA below -1.5°C (5°F) or above 54°C (130°F). ⚠ Circling Rwy 11, 29 NA at night. DME/DME RNP-0.3 NA.</p>	<p>MALSR</p>	<p>MISSED APPROACH: Climb to 2300 direct IKEWI and left turn on track 063° to KASYR and on track 004° to CMK VOR/DME and hold.</p>
---	--------------	--

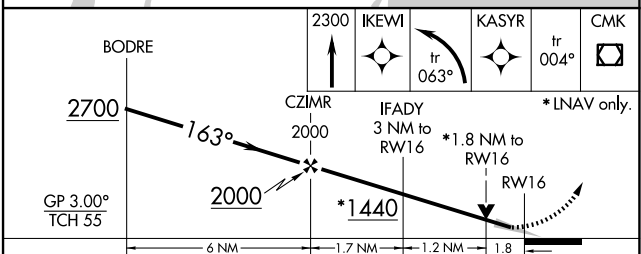
D-ATIS 133.8	NEW YORK APP CON 120.8 126.4 257.65	WESTCHESTER TOWER * 118.575 (CTAF) 284.65	GND CON 121.825	CLNC DEL 127.25	CLNC DEL 126.4 (when twr closed)	UNICOM 122.95
------------------------	---	--	---------------------------	---------------------------	---	-------------------------



ELEV 439	D	TDZE 439
-----------------	----------	-----------------



- REIL Rws 11 and 34
- HIRL Rwy 16-34
- MIRL Rwy 11-29
- TDZ/CL Rwy 16



CATEGORY	A	B	C	D
LPV DA		689/24	250 (300-½)	
LNAV/VNAV DA		978-1½	539 (600-1½)	
LNAV MDA	1060/24	621 (700-½)	1060/60 621 (700-1¼)	1060-1½ 621 (700-1½)
C CIRCLING	1060-1	621 (700-1)	1080-1¾ 641 (700-1¾)	1200-2 ½ 761 (800-2½)

NE-2, 15 MAY 2025 to 12 JUN 2025

NE-2, 15 MAY 2025 to 12 JUN 2025