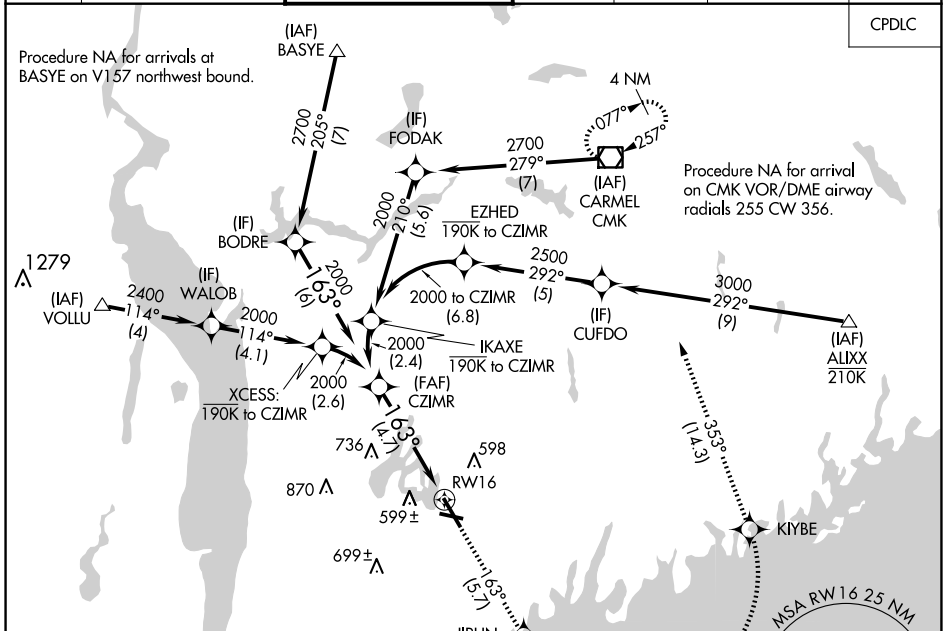


APP CRS	Rwy ldg	6549
163°	TDZE	439
	Apt Elev	439

RNAV (RNP) Z RWY 16

WESTCHESTER COUNTY (HPN)

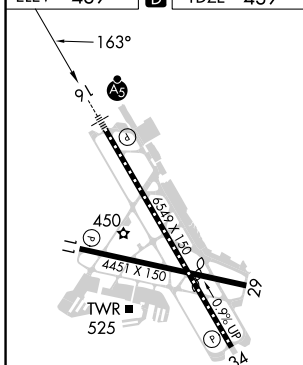
RNP AR APCH - GPS.		MALSR	MISSED APPROACH: Climb to 3000 on track 163° to JIRUN, left turn to KIYBE, then track 353° to CMK VOR/DME and hold.		
For uncompensated Baro-VNAV systems, procedure NA below -14°C or above 54°C.			D-ATIS	NEW YORK APP CON	WESTCHESTER TOWER ★
133.8	120.8 126.4 257.65	118.575 (CTAF) 0 284.65	121.825	127.25	126.4 (when twr closed)
			UNICOM		
			122.95		



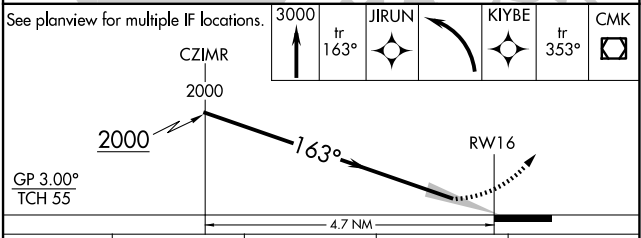
NE-2, 15 MAY 2025 to 12 JUN 2025

NE-2, 15 MAY 2025 to 12 JUN 2025

ELEV	439	D	TDZE	439
------	------------	---	------	------------



- REIL Rwy 11 and 34
- HIRL Rwy 16-34
- MIRL Rwy 11-29
- TDZ/CL Rwy 16



CATEGORY	A	B	C	D
RNP 0.15 DA		826/35	387 (400-5/8)	
RNP 0.30 DA		950/55	511 (600-1)	

AUTHORIZATION REQUIRED