

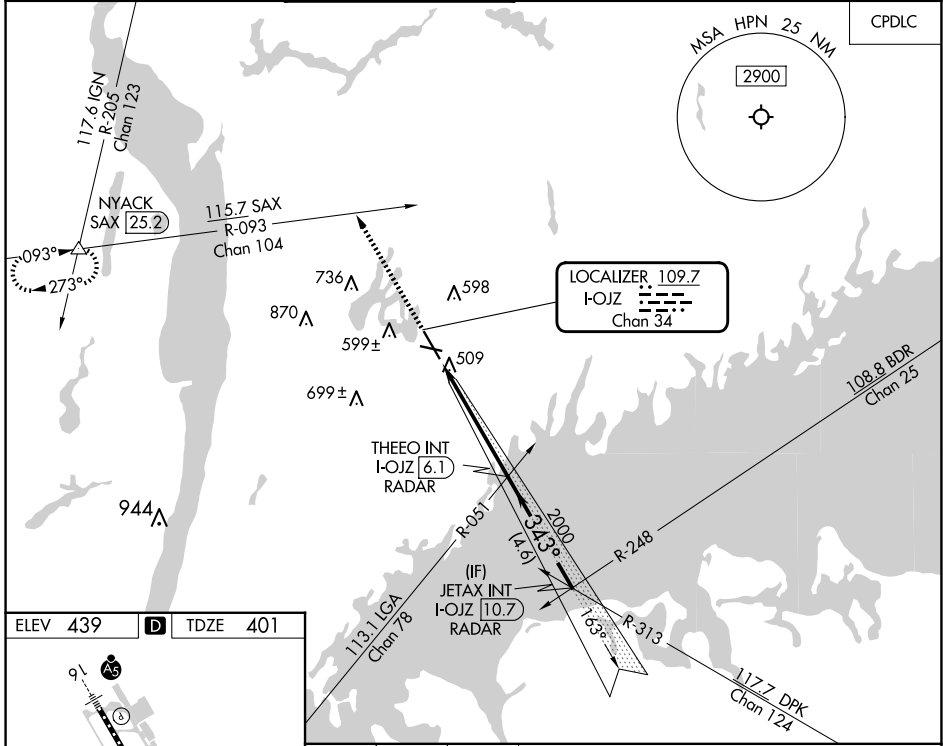
LOC/DME I-OJZ 109.7 Chan 34	APP CRS 343°	Rwy Idg 6549 TDZE 401 Apt Elev 439
--	------------------------	---

ILS or LOC RWY 34

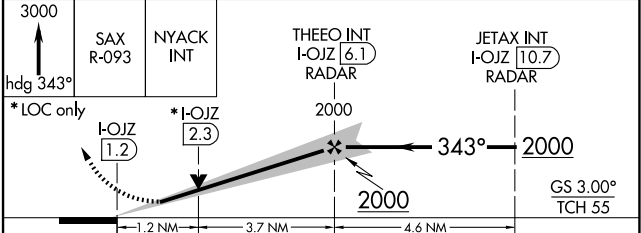
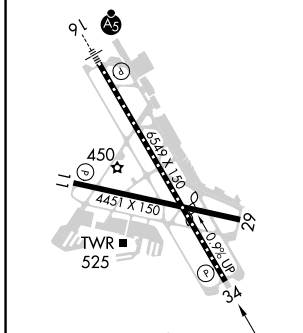
WESTCHESTER COUNTY (HPN)

RADAR required for procedure entry.		MISSED APPROACH: Climb to 3000 on heading 343° and SAX R-093 to NYACK INT/SAX 25.2 DME and hold.				
<p>▼ Circling Rwy 11, 29 NA at night.</p> <p>▲ Rwy 34 helicopter visibility reduction below ¾ SM NA.</p>						

D-ATIS 133.8	NEW YORK APP CON 120.8 126.4 257.65	WESTCHESTER TOWER ★ 118.575 (CTAF) 284.65	GND CON 121.825	CLNC DEL 127.25	CLNC DEL 126.4 (when twr closed)	UNICOM 122.95
------------------------	---	--	---------------------------	---------------------------	---	-------------------------



ELEV 439	D	TDZE 401
-----------------	----------	-----------------



CATEGORY	A	B	C	D
S-ILS 34	742/60		341 (400-1¼)	
S-LOC 34	800/55	399 (400-1)		800/60 399 (400-1¼)
☑ CIRCLING	980-1	541 (600-1)		1080-1¾ 641 (700-1¾) 1200-2½ 761 (800-2½)

NE-2, 15 MAY 2025 to 12 JUN 2025

NE-2, 15 MAY 2025 to 12 JUN 2025