


LOC/DME I-EWB 109.7 Chan 34	APP CRS 234°	Rwy Idg TDZE Apt Elev	5000 78 79
--	------------------------	-----------------------------	---------------------------------------

LOC BC RWY 23

NEW BEDFORD RGNL (EWB)

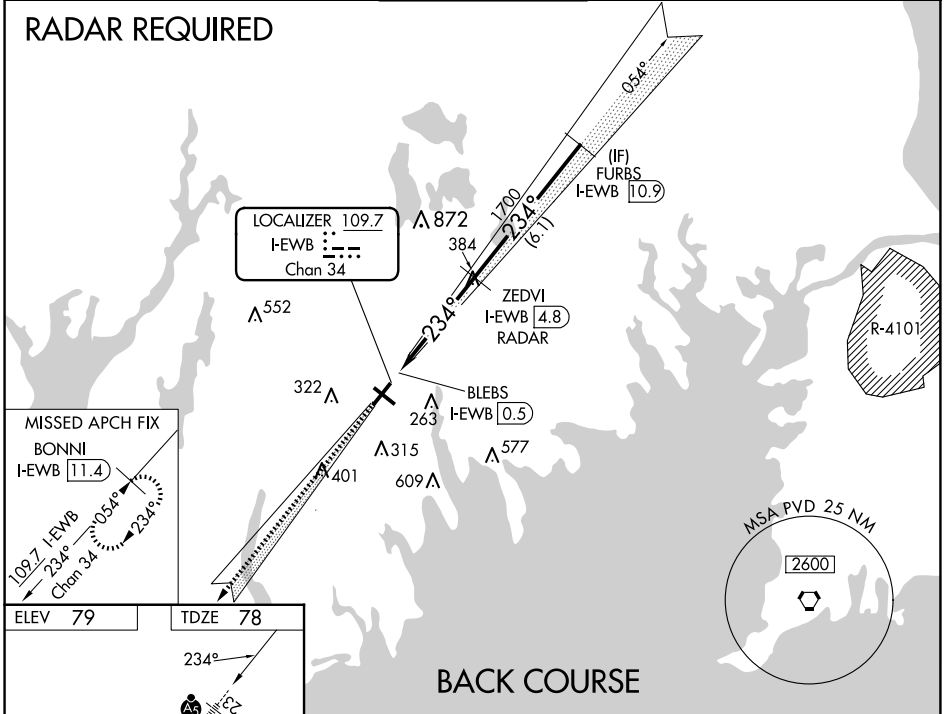
⚠ When local altimeter setting not received, use Taunton altimeter setting and increase all MDA 40 feet and increase S-23 Cats C and D visibility 1/8 SM. VDP NA with Taunton altimeter setting. Helicopter visibility reduction below 3/4 SM NA. For inop MALSRL increase S-23 Cat A/B visibility 1/4 mile and Cat C/D visibility 3/8 mile. For inop MALSRL when using Taunton altimeter setting, increase S-23 Cat A/B visibility 1/4 mile.

MALSRL 

MISSED APPROACH: Climb to 2100 on I-EWB SW course to BONNI/I-EWB 11.4 DME and hold.

ATIS 126.85	PROVIDENCE APP CON* 128.7 269.525	NEW BEDFORD TOWER* 118.1 (CTAF) 0 239.0	GND CON 121.9	UNICOM 122.95
-----------------------	---	---	-------------------------	-------------------------

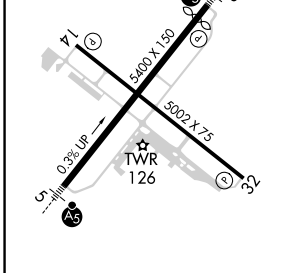
RADAR REQUIRED



NE-1, 15 MAY 2025 to 12 JUN 2025

NE-1, 15 MAY 2025 to 12 JUN 2025

ELEV 79	TDZE 78
---------	---------



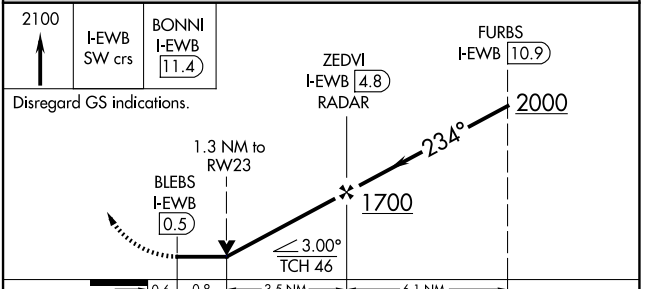
MIRL Rwy 14-32 **Ⓛ**
HIRL Rwy 5-23 **Ⓛ**
REIL Rwy 32 **Ⓛ**

FAF to MAP 4.3 NM

Knots	60	90	120	150	180
Min:Sec	4:18	2:52	2:09	1:43	1:26

NEW BEDFORD, MASSACHUSETTS
Amdt 13A 20APR23

BACK COURSE



CATEGORY	A	B	C	D
S-23	580-3/4 502 (600-3/4)		580-1 502 (600-1)	
Ⓛ CIRCLING	620-1 541 (600-1)	640-1 561 (600-1)	720-1 3/4 641 (700-1 3/4)	960-3 881 (900-3)

41°41'N-70°57'W

NEW BEDFORD RGNL (EWB) LOC BC RWY 23