


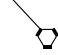
(SRQ6.SRQ) 25107

AL-640 (FAA)

SARASOTA SIX DEPARTURE

SARASOTA/BRADENTON INTL (SRQ)
SARASOTA (BRADENTON), FLORIDA

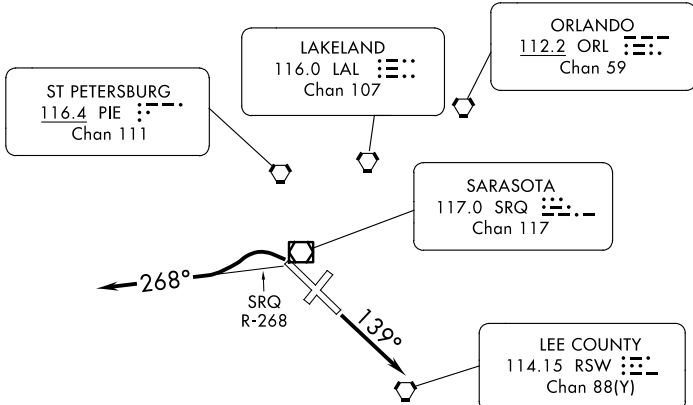
SEMINOLE
117.5 SZW 
Chan 122



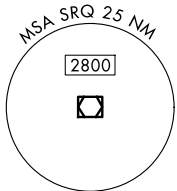
**TOP ALTITUDE:
3000**

RADAR required.

TAMPA DEP CON
119.65 353.575
ATIS
124.375
CLNC DEL
118.25
GND CON
121.9 273.6
SARASOTA TOWER ★
120.1 (CTAF) 256.8



TAKEOFF MINIMUMS
Rwys 4, 22: NA-ATC.
Rwy 14: Standard.
Rwy 32: Standard with ATC climb of 500'/NM to 540.



NOTE: Rwy 32, Turbojet aircraft do not turn prior to departure end of Rwy.

NOTE: Chart not scale.



DEPARTURE ROUTE DESCRIPTION

TAKEOFF RUNWAY 14: Climb heading 139°. Expect RADAR vectors to join assigned route, thence. . . .

TAKEOFF RUNWAY 32: Climbing left turn to intercept SRQ R-268 westbound or as assigned by ATC. Expect RADAR vectors to join assigned route, thence. . . .

. . . .maintain 3000 or as assigned by ATC. Expect clearance to filed altitude ten minutes after departure.

SARASOTA SIX DEPARTURE

(SRQ6.SRQ) 17APR25

SARASOTA (BRADENTON), FLORIDA
SARASOTA/BRADENTON INTL (SRQ)

SE-3, 15 MAY 2025 to 12 JUN 2025

SE-3, 15 MAY 2025 to 12 JUN 2025