

APP CRS **129°**  
 Rwy Idg **3907**  
 TDZE **398**  
 Apt Elev **398**

# RNAV (GPS) RWY 13

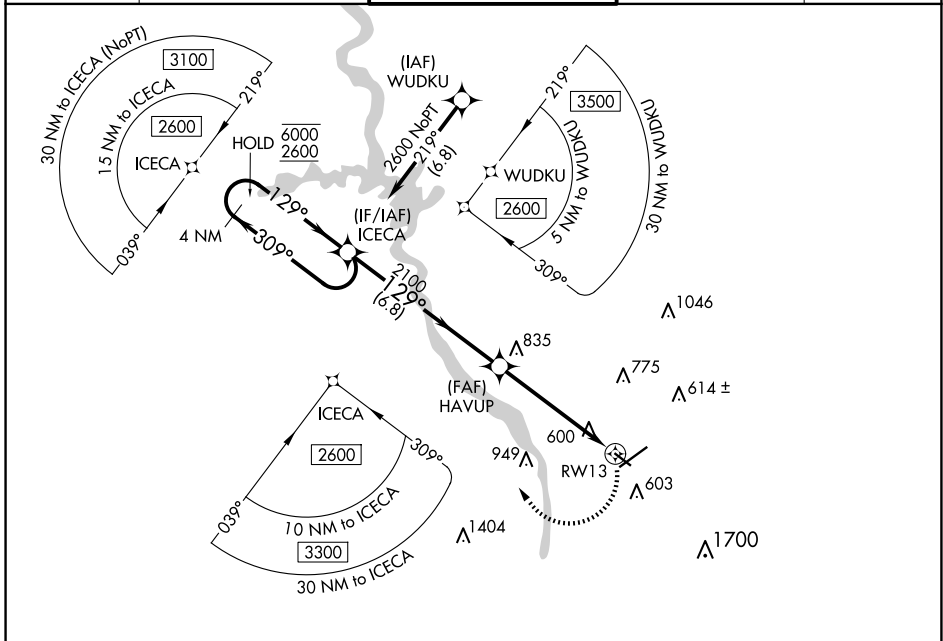
COLUMBUS (CSG)

RNP APCH - GPS.

**▼** Circling to Rwy 13, 31 and 24 NA at night. Rwy 13 helicopter visibility reduction below 1 SM NA. Rwy 13 Straight-in minimums NA at night.  
**▲**

MISSED APPROACH: Climbing right turn to 2600 direct ICECA and hold.

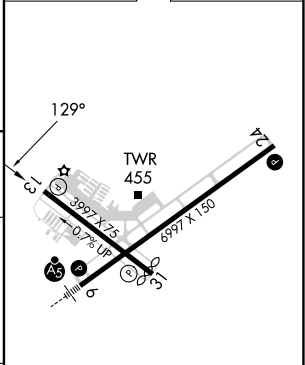
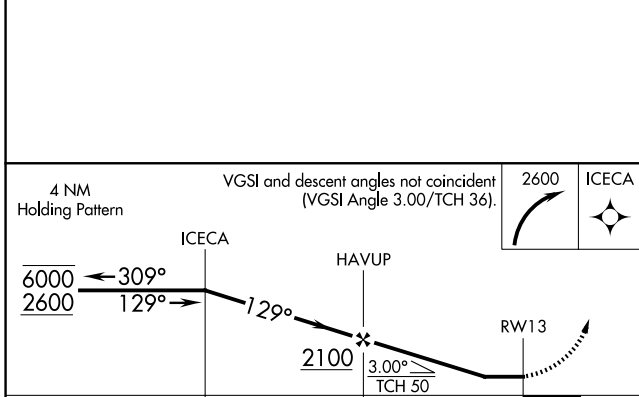
ATIS <b>127.75</b>	ATLANTA APP CON * <b>125.5 323.1</b>	COLUMBUS TOWER * <b>120.1 (CTAF) 257.8</b>	GND CON <b>121.9 348.6</b>	UNICOM <b>122.95</b>
-----------------------	---	---	-------------------------------	-------------------------



SE-4, 15 MAY 2025 to 12 JUN 2025

SE-4, 15 MAY 2025 to 12 JUN 2025

ELEV 398 **D** TDZE 398



CATEGORY	A	B	C	D
LNVA MDA	1040-1 642 (700-1)		1040-1 $\frac{7}{8}$ 642 (700-1 $\frac{7}{8}$ )	
<b>C</b> CIRCLING	1040-1 642 (700-1)		1140-2 $\frac{1}{4}$ 742 (800-2 $\frac{1}{4}$ )	1300-3 902 (1000-3)

REIL Rwy 24 **1**  
 HIRL Rwy 6-24 **1**  
 MIRL Rwy 13-31 **1**  
 REIL Rwy 13 and 31