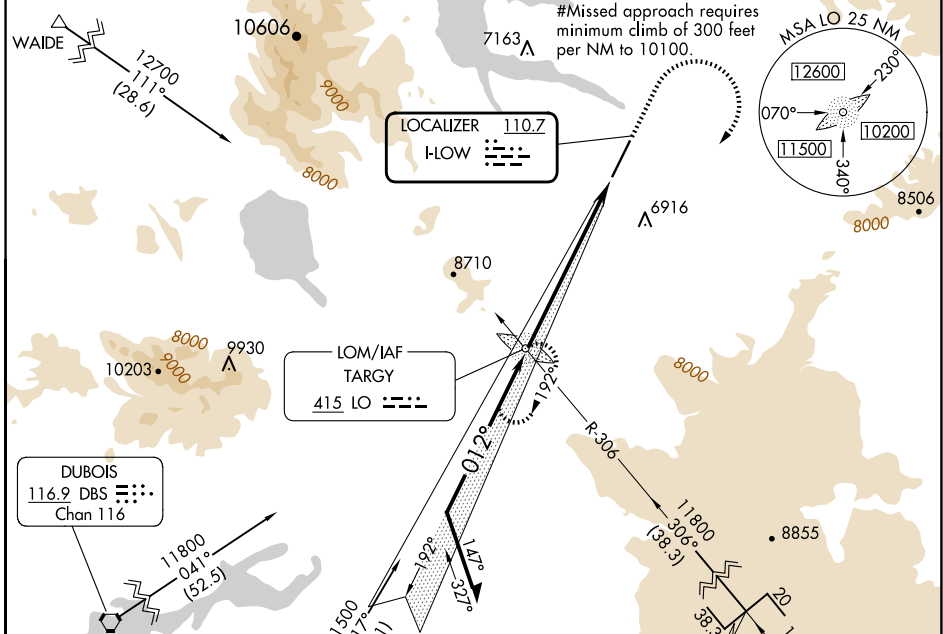


LOC I-LOW 110.7	APP CRS 012°	Rwy Idg TDZE Apt Elev	8400 6649 6649
---------------------------	------------------------	-----------------------------	---

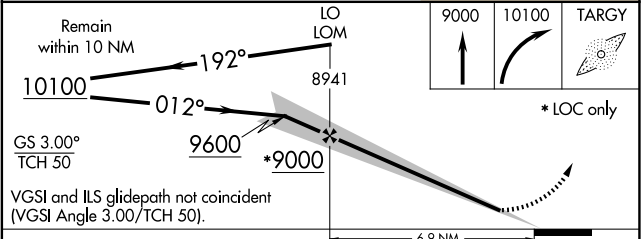
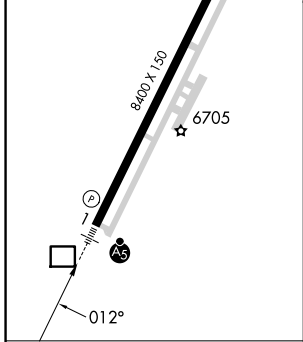
ILS or LOC RWY 1 YELLOWSTONE (WYS)

ADF required. DME required for MUPDE stepdown fix.	MALSR 	MISSED APPROACH: Climb to 9000, then climbing right turn to 10100 direct TARGY LOM and hold.
NA. Inoperative table does not apply to S-LOC 1 Cat A. For inoperative MALSR, increase S-ILS 1 all Cats visibility to 2 3/4 mile.		

AWOS-3P 118.1	SALT LAKE CENTER 132.4 338.3	UNICOM 123.0 (CTAF)
-------------------------	--	-------------------------------



ELEV 6649	D	TDZE 6649
HIRL Rwy 1-19		
REIL Rwy 19		



CATEGORY	A	B	C	D
S-ILS 1#		6849-1/2	200 (200-1/2)	
S-ILS 1		7449-2 1/4	800 (800-2 1/4)	
S-LOC 1	7780-1 1/4 1131 (1200-1 1/4)	7780-1 1131 (1200-1)	7780-2 1/2 1131 (1200-2 1/2)	8020-3 1371 (1400-3)
C CIRCLING	7780-1 1/4 1131 (1200-1 1/4)	7780-1 1/2 1131 (1200-1 1/2)	7780-3 1131 (1200-3)	8020-3 1371 (1400-3)

FAF to MAP 6.9 NM					
Knots	60	90	120	150	180
Min:Sec	6:54	4:36	3:27	2:46	2:18

NW-1, 15 MAY 2025 to 12 JUN 2025

NW-1, 15 MAY 2025 to 12 JUN 2025