

(PIE1.PIE) 25107

AL-625 (FAA)

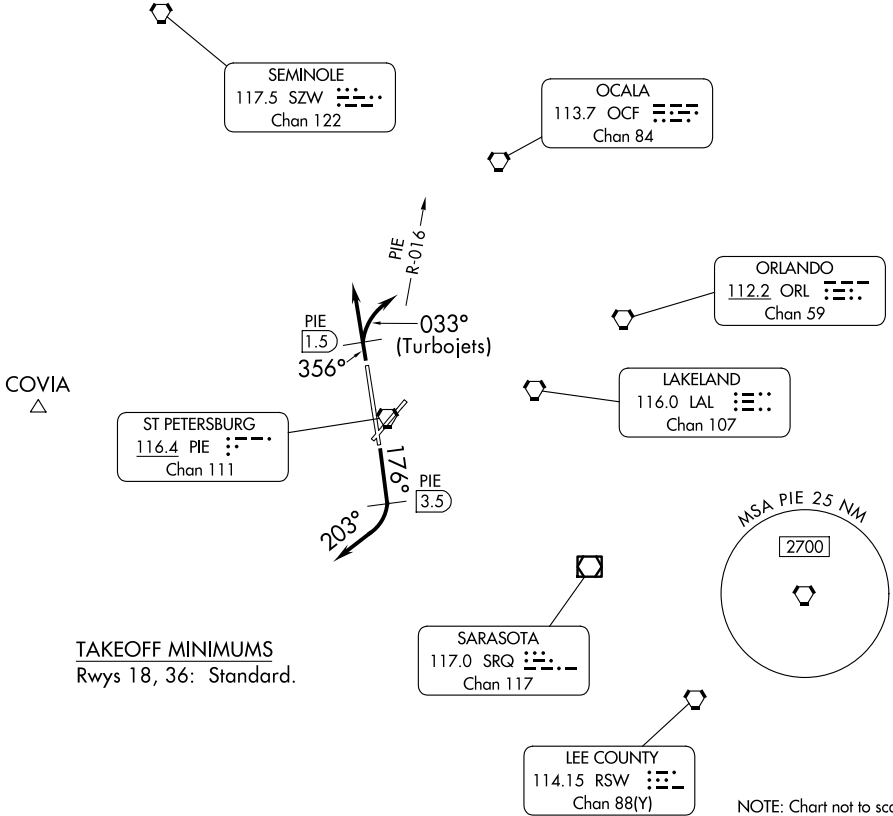
ST PETE-CLEARWATER INTL (PIE)  
ST PETERSBURG-CLEARWATER, FLORIDA

# ST PETE ONE DEPARTURE

TAMPA DEP CON  
125.3 316.05  
ATIS  
134.5  
GND CON  
121.9 348.6  
ST PETERSBURG-CLEARWATER TOWER★  
118.3 (CTAF) 257.8

RADAR required.  
DME required.

**TOP ALTITUDE:  
1600**



**TAKEOFF MINIMUMS**  
Rwys 18, 36: Standard.

NOTE: Chart not to scale.

## DEPARTURE ROUTE DESCRIPTION

**TAKEOFF RUNWAY 18:** Climb heading 176° until PIE VORTAC 3.5 DME, then turn right heading 203° or as assigned for RADAR vectors to filed/assigned route, thence. . . .

**TAKEOFF RUNWAY 36:** Turbojets climb heading 356° until PIE VORTAC 1.5 DME, then turn right heading 033° to intercept and fly outbound on PIE R-016 or as assigned for RADAR vectors to filed/assigned route, thence. . . .

**ALL OTHERS** fly heading 356° or as assigned for RADAR vectors to filed/assigned route. Thence. . . .

. . . .maintain 1600, expect further clearance to filed altitude 10 minutes after departure.

**ST PETE ONE DEPARTURE**  
(PIE1.PIE) 17APR25

ST PETERSBURG-CLEARWATER, FLORIDA  
ST PETE-CLEARWATER INTL (PIE)

SE-3, 15 MAY 2025 to 12 JUN 2025

SE-3, 15 MAY 2025 to 12 JUN 2025