

(BAYPO2.BAYPO) 24137

AL-625 (FAA)

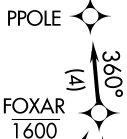
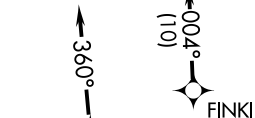
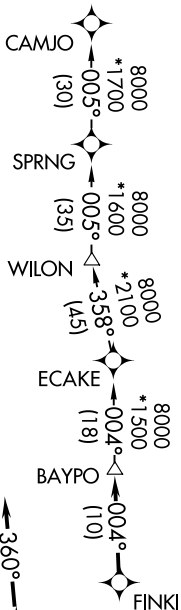
ST PETE-CLEARWATER INTL (PIE)
ST PETERSBURG-CLEARWATER, FLORIDA

BAYPO TWO DEPARTURE (RNAV)

TAMPA DEP CON
125.3 316.05
ATIS
134.5
CLNC DEL
120.6 350.2
GND CON
121.9 348.6
ST. PETERSBURG-CLEARWATER TOWER*
118.3 (CTAF) 257.8

**TOP ALTITUDE:
1600**

RNAV 1 - DME/DME/IRU or GPS required.
RADAR required.

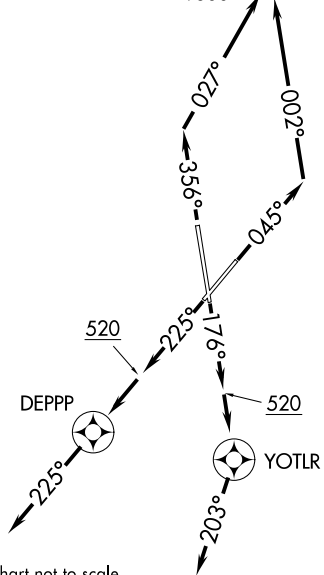


TAKEOFF MINIMUMS

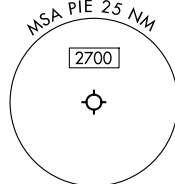
Rwy 18: Standard.
Rwys 4, 36: Standard with minimum climb of 500'/NM to 520.
Rwy 22: Standard with minimum climb of 230'/NM to 300.

NOTE: Jet aircraft only.

NOTE: WILON Transition for use by aircraft filed to Jacksonville area airports only, or as assigned by ATC.



NOTE: Chart not to scale.



(CONTINUED ON FOLLOWING PAGE)

BAYPO TWO DEPARTURE (RNAV)
(BAYPO2.BAYPO) 16MAY24

ST PETERSBURG-CLEARWATER, FLORIDA
ST PETE-CLEARWATER INTL (PIE)

SE-3, 15 MAY 2025 to 12 JUN 2025

SE-3, 15 MAY 2025 to 12 JUN 2025