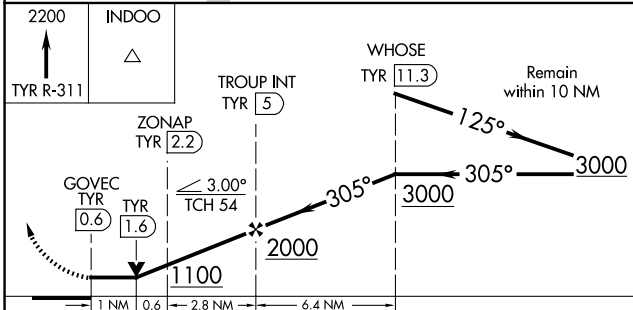
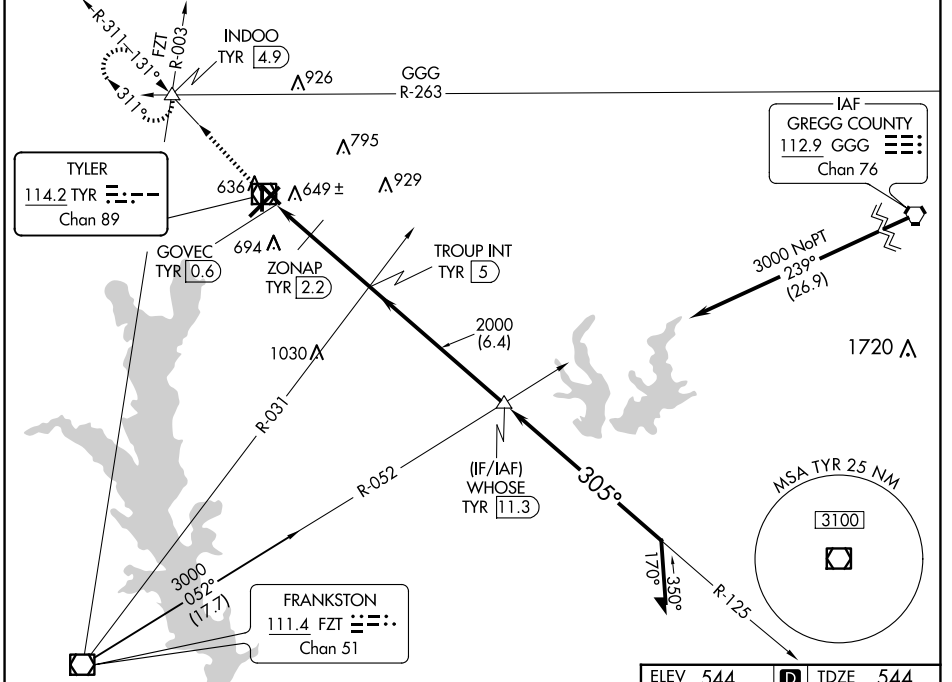


VOR/DME TYR	APP CRS	Rwy Idg	5198
114.2	305°	TDZE	544
Chan 89		Apt Elev	544

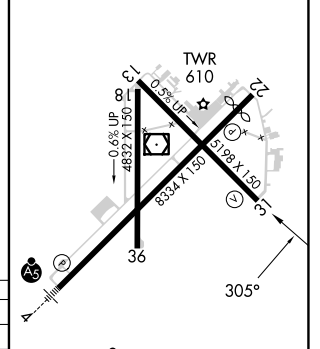
# VOR RWY 31

TYLER POUNDS RGNL (TYR)

<p><b>▼</b> Rwy 31 helicopter visibility reduction below 3/4 SM NA.</p> <p><b>▲</b> MISSED APPROACH: Climb to 2200 on TYR VOR/DME R-311 to INDOO INT/4.9 DME and hold.</p>	<p>ATIS</p> <p>126.25</p>	<p>LONGVIEW APP CON *</p> <p>128.75 379.15</p>	<p>POUNDS TOWER *</p> <p>120.1 (CTAF) <b>257.8</b></p>	<p>GND CON</p> <p>121.9</p>	<p>UNICOM</p> <p>122.95</p>
--	---------------------------	--	--	-----------------------------	-----------------------------



ELEV 544 **D** TDZE 544



CATEGORY	A	B	C	D
S-31	1100-1	556 (600-1)	1100-1 1/2	556 (600-1 1/2)
<b>C</b> CIRCLING	1100-1	556 (600-1)	1160-1 3/4	1280-2 1/4
ZONAP FIX MINIMUMS (DME REQUIRED)				
S-31	920-1 376 (400-1)			
<b>C</b> CIRCLING	980-1	1020-1	1160-1 3/4	1280-2 1/4
	436 (500-1)	476 (500-1)	616 (700-1 3/4)	736 (800-2 1/4)

REIL Rwy 22 <b>1</b>	FAF to MAP 4.4 NM
MRL Rwy 18-36 <b>1</b>	
HRL Rwy 4-22 and 13-31 <b>1</b>	
Knots	60 90 120 150 180
Min:Sec	4:24 2:56 2:12 1:46 1:28

SC-2, 15 MAY 2025 to 12 JUN 2025

SC-2, 15 MAY 2025 to 12 JUN 2025