

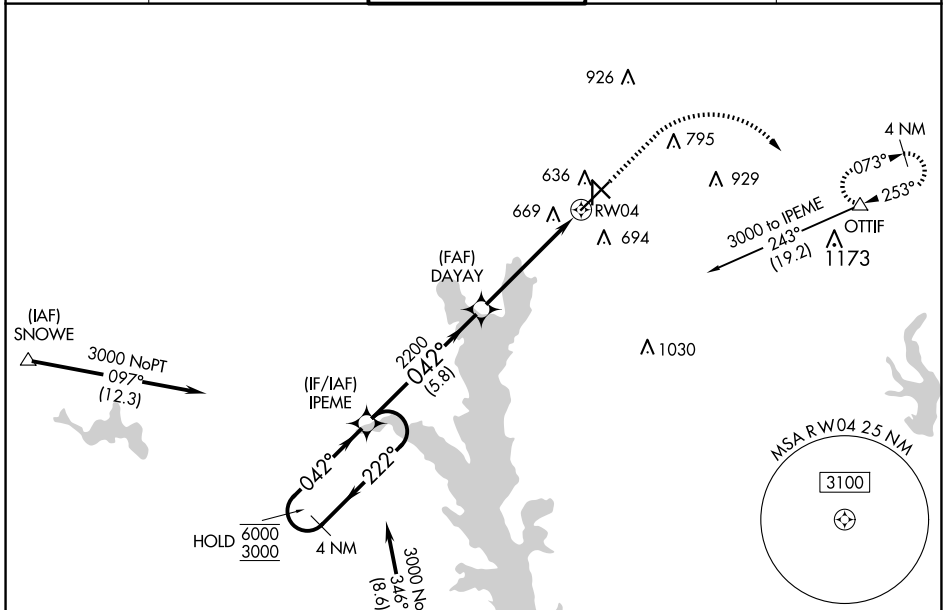
WAAS CH 40014 W04A	APP CRS 042°	Rwy Idg TDZE Apt Elev	7734 542 544
--	------------------------	-----------------------------	---

RNAV (GPS) RWY 4

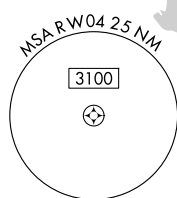
TYLER POUNDS RGNL (TYR)

RNP APCH - GPS.		MALSRL	MISSED APPROACH: Climb to 1100 then climbing right turn to 2500 direct OTTIF and hold.
<p>▼ ▲ For uncompensated Baro-VNAV systems, LNAV/VNAV NA below -7°C or above 54°C. For inop ALS, increase LNAV/VNAV all Cats visibility to 1½ SM, LNAV all Cats visibility to 1 SM.</p>			

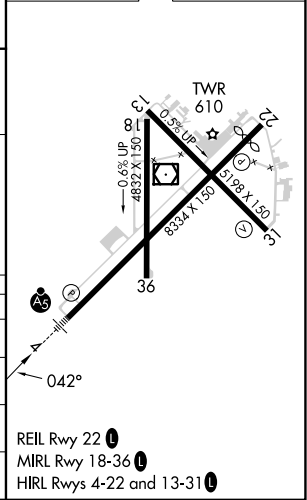
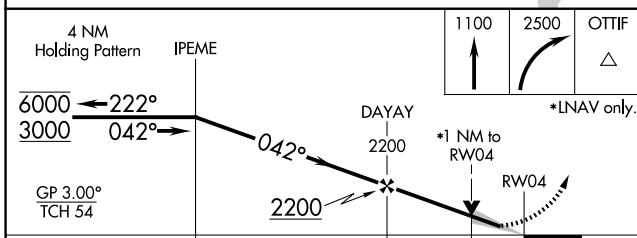
ATIS 126.25	LONGVIEW APP CON ★ 128.75 379.15	POUNDS TOWER ★ 120.1 (CTAF) 257.8	GND CON 121.9	UNICOM 122.95
-----------------------	--	---	-------------------------	-------------------------



Procedure NA for arrival on FZT VOR/DME airway radials 275 CW 004.



ELEV 544	D TDZE 542
----------	-------------------



CATEGORY	A	B	C	D
LPV DA		742-½	200 (200-½)	
LNAV/VNAV DA		943-¾	401 (400-¾)	
LNAV MDA	920-½ 378 (400-½)		920-⅝ 378 (400-⅝)	
C CIRCLING	980-1 436 (500-1)	1020-1 476 (500-1)	1160-1¾ 616 (700-1¾)	1280-2¼ 736 (800-2¼)

SC-2, 15 MAY 2025 to 12 JUN 2025

SC-2, 15 MAY 2025 to 12 JUN 2025