

TYLER, TEXAS

AL-622 (FAA)

23278

WAAS CH 73037 W36A	APP CRS 357°	Rwy Idg TDZE Apt Elev	4832 544 544
--	------------------------	-----------------------------	---

RNAV (GPS) RWY 36

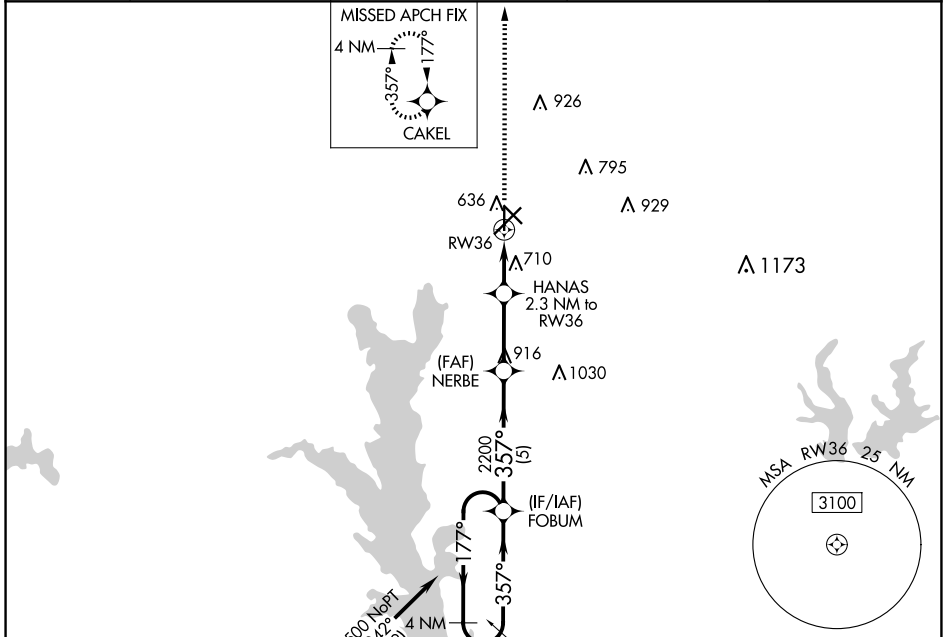
TYLER POUNDS RGNL (TYR)

RNP APCH.

▼ Rwy 36 helicopter visibility reduction below 3/4 SM NA. For uncompensated Baro-VNAV systems, LNAV/VNAV NA below -6°C or above 54°C

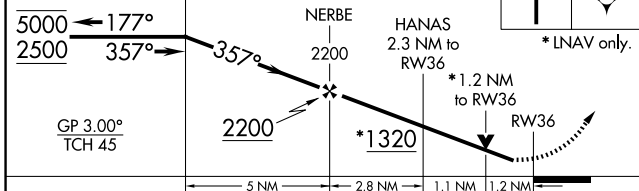
▲ MISSED APPROACH: Climb to 2500 direct CAKEL and hold.

ATIS 126.25	LONGVIEW APP CON ★ 128.75 379.15	POUNDS TOWER ★ 120.1 (CTAF) 0 257.8	GND CON 121.9	UNICOM 122.95
-----------------------	--	---	-------------------------	-------------------------

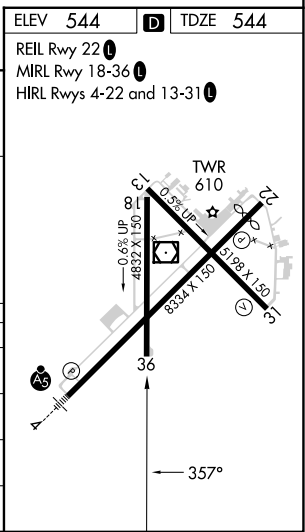


ELEV 544	D TDZE 544
----------	-------------------

REIL Rwy 22 **①**
MIRL Rwy 18-36 **①**
HIRL Rwy 4-22 and 13-31 **①**



CATEGORY	A	B	C	D
LPV DA		794-1	250 (300-1)	
LNAV/VNAV DA		799-1	255 (300-1)	
LNAV MDA	960-1	416 (500-1)	960-1 1/8	416 (500-1 1/8)
C CIRCLING	980-1 436 (500-1)	1020-1 476 (500-1)	1160-1 3/4 616 (700-1 3/4)	1280-2 1/4 736 (800-2 1/4)



TYLER, TEXAS
Amdt 1A 25FEB21

32°21'N-95°24'W

TYLER POUNDS RGNL (TYR) RNAV (GPS) RWY 36

SC-2, 15 MAY 2025 to 12 JUN 2025

SC-2, 15 MAY 2025 to 12 JUN 2025