

WAAS CH <b>45514</b> <b>W22A</b>	APP CRS <b>222°</b>	Rwy Idg TDZE Apt Elev	<b>7734</b> <b>539</b> <b>544</b>
--	------------------------	-----------------------------	---

# RNAV (GPS) RWY 22

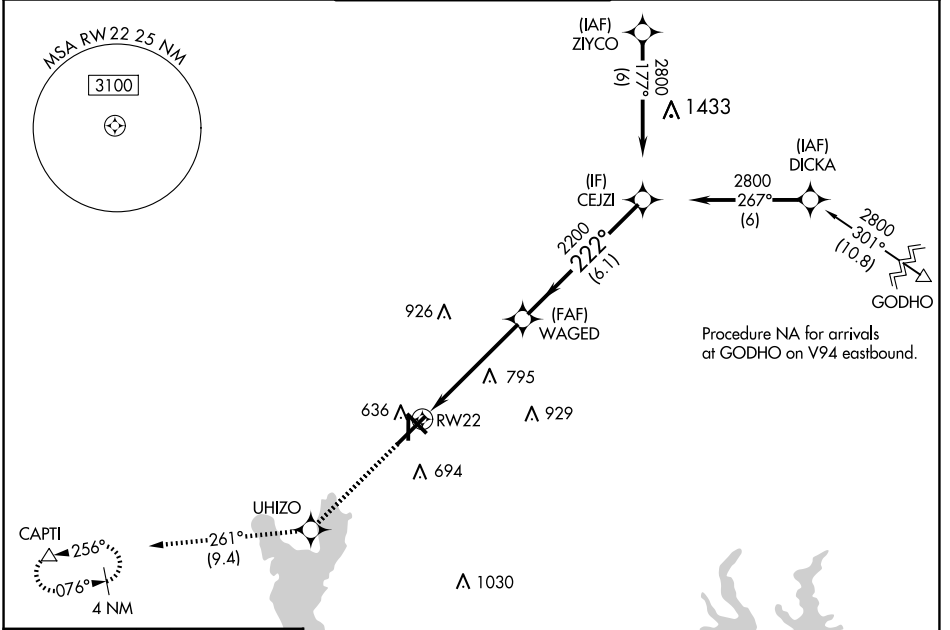
TYLER POUNDS RGNL (TYR)

RNP APCH.

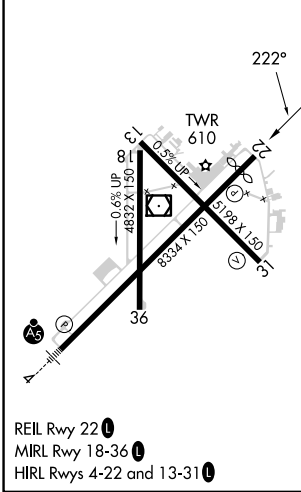
**▽** For uncompensated Baro-VNAV systems, LNAV/VNAV NA below -5°C or above 54°C.

**▲** MISSED APPROACH: Climb to 2500 direct UHIZO and on track 261° to CAPTI and hold.

ATIS <b>126.25</b>	LONGVIEW APP CON* <b>128.75 379.15</b>	POUNDS TOWER* <b>120.1 (CTAF) 257.8</b>	GND CON <b>121.9</b>	UNICOM <b>122.95</b>
-----------------------	---	--	-------------------------	-------------------------



ELEV <b>544</b>	<b>D</b>	TDZE <b>539</b>
-----------------	----------	-----------------



2500	UHIZO	tr 261°	CAPTI	
*LNAV only.				
CATEGORY	A	B	C	D
LPV DA		739-3/4	200 (200-3/4)	
LNAV/VNAV DA		807-7/8	268 (300-7/8)	
LNAV MDA	1040-1	501 (500-1)	1040-1 3/8	501 (500-1 3/8)
<b>C</b> CIRCLING	1040-1	496 (500-1)	1160-1 3/4 616 (700-1 3/4)	1280-2 1/4 736 (800-2 1/4)

GP 3.00° TCH 54

SC-2, 15 MAY 2025 to 12 JUN 2025

SC-2, 15 MAY 2025 to 12 JUN 2025