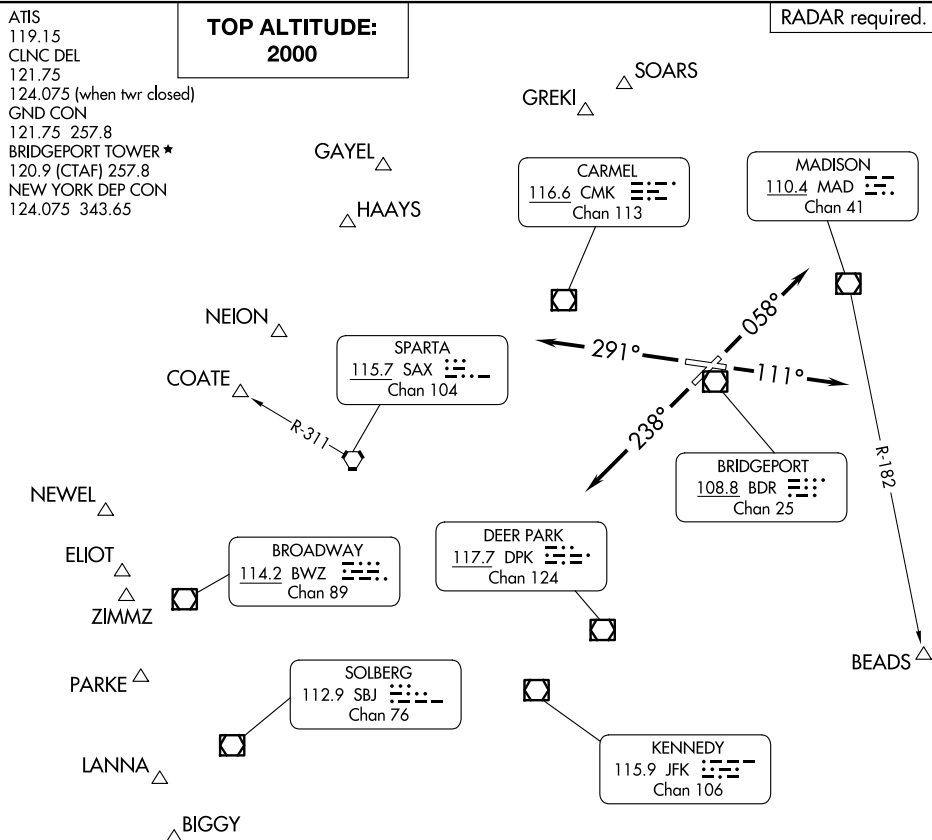


BRIDGEHAVEN ONE DEPARTURE

AL-621 (FAA)

BRIDGEPORT, CONNECTICUT



NE-1, 15 MAY 2025 to 12 JUN 2025

NE-1, 15 MAY 2025 to 12 JUN 2025

TAKEOFF MINIMUMS:
 Rwy 6, 11, 24: Standard.
 Rwy 29: 600-2³/₄ or standard with minimum climb of 300' per NM to 700.

- NOTE: BEADS Departures expect vectors to MAD R-182.
 NOTE: COATE Departures expect vectors to SAX/SAX R-311.
 NOTE: ELIOT authorized for all aircraft types but restricted to a final altitude of 14000 or 16000.
 NOTE: NEWEL authorized only for jet aircraft requesting a final altitude of FL180 and above.
 NOTE: ZIMMZ authorized for all aircraft types but restricted to a final altitude of FL180 and above.

DEPARTURE ROUTE DESCRIPTION

TAKEOFF RUNWAY 6: Climb heading 058°, thence. . .
TAKEOFF RUNWAY 11: Climb heading 111°, thence. . .
TAKEOFF RUNWAY 24: Climb heading 238°, thence. . .
TAKEOFF RUNWAY 29: Climb heading 291°, thence. . .
 . . . expect vectors to assigned route/fix. Maintain 2000. Expect clearance to filed altitude/flight level within ten (10) minutes after departure.

BRIDGEHAVEN ONE DEPARTURE