

VOR/DME ECG <b>115.75</b> Chan <b>104 (Y)</b>	APP CRS <b>184°</b>	Rwy Idg <b>4518</b> TDZE <b>11</b> Apt Elev <b>11</b>
---	------------------------	---

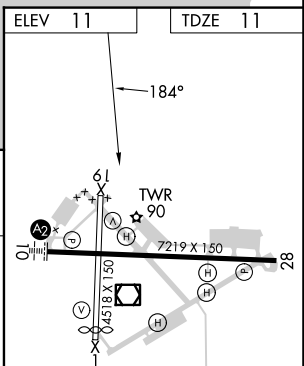
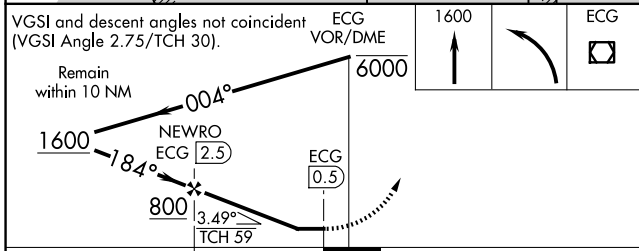
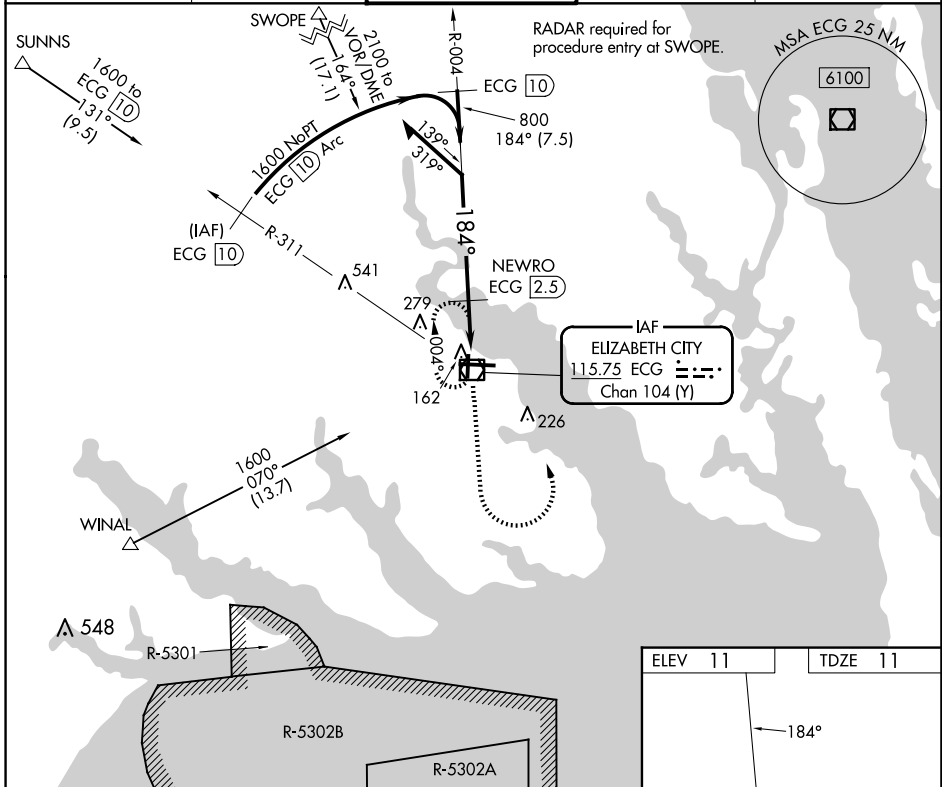
# VOR/DME RWY 19

ELIZABETH CITY CG AIR STATION/RGNL (ECG)

**Procedure NA** when tethered balloon located approximately 2 miles southeast of airport is flying. When local altimeter setting not received, use Currituck altimeter setting and increase all MDAs 40 feet.

**MISSED APPROACH:** Climb to 1600 then left turn direct ECG VOR/DME and hold.

ASOS <b>124.375</b>	NORFOLK APP CON <b>119.55 269.425</b>	ELIZABETH CITY TOWER★ <b>120.5 (CTAF) 355.6</b>	GND CON <b>121.9</b>	UNICOM <b>122.95</b>
------------------------	--	--	-------------------------	-------------------------



CATEGORY	A	B	C	D
S-19	480-1 469 (500-1)		480-1 3/8 469 (500-1 3/8)	480-1 1/2 469 (500-1 1/2)
CIRCLING	480-1 469 (500-1)		640-1 3/4 629 (700-1 3/4)	640-2 629 (700-2)

SE-2, 15 MAY 2025 to 12 JUN 2025

SE-2, 15 MAY 2025 to 12 JUN 2025